

## MC 1080

13/11/2013

### Meso-zooplankton abundance:

669 ind. m<sup>-3</sup>

### Long-term average (November, 1984-2012):

873 ± 273 ind. m<sup>-3</sup>

### Most abundant taxa: copepod

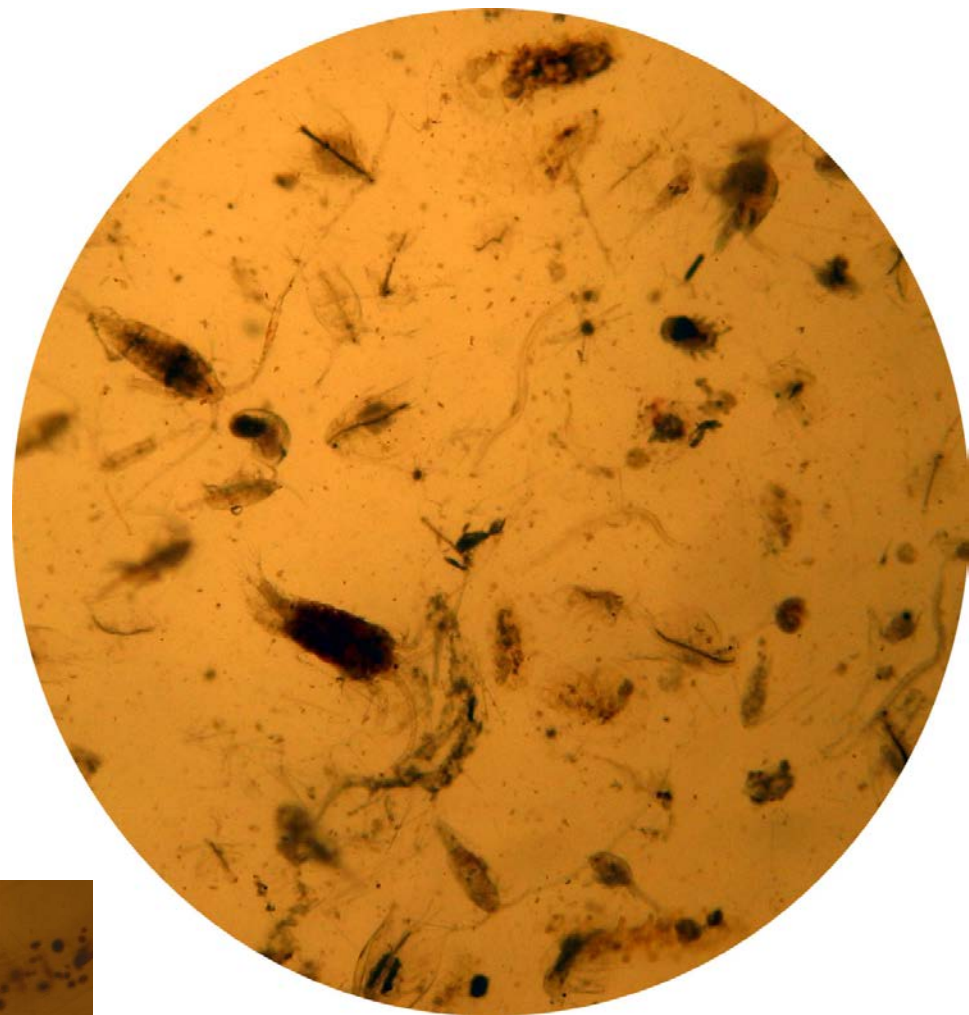
*Temora stylifera*

Dry mass: 6.3 mg m<sup>-3</sup> (07/11/13, MC 1079)

### Long-term average (November, 1984-2012):

8.5 ± 3.2 mg m<sup>-3</sup>

**Note:** *Sagitta enflata*  
with parasites



Today's alive sample