

## MC 1121

16/09/2014

### Meso-zooplankton abundance:

3013 ind. m<sup>-3</sup>

### Long-term average (September, 1984-2013):

2265 ± 1270 ind. m<sup>-3</sup>

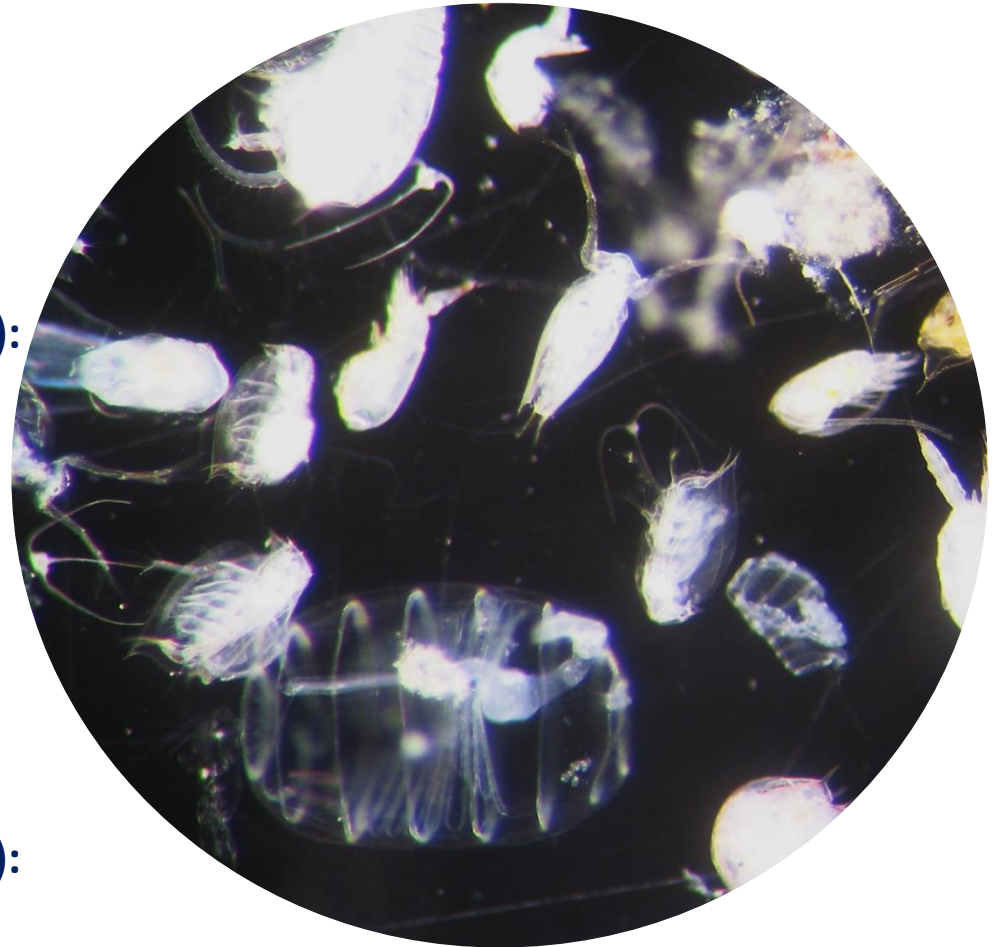
### Most abundant taxa :

- cladoceran *Penilia avirostris* (68%)
- copepod assemblage (18%)

**Dry mass:** 9 mg m<sup>-3</sup> (weight after 48h)

### Long-term average (September, 1984-2013):

10.2 ± 4.9 mg m<sup>-3</sup>



Live sample