

MC 1123

30/09/2014

Meso-zooplankton abundance:

1483 ind. m⁻³

Long-term average (September, 1984-2013):

2265 ± 1270 ind. m⁻³

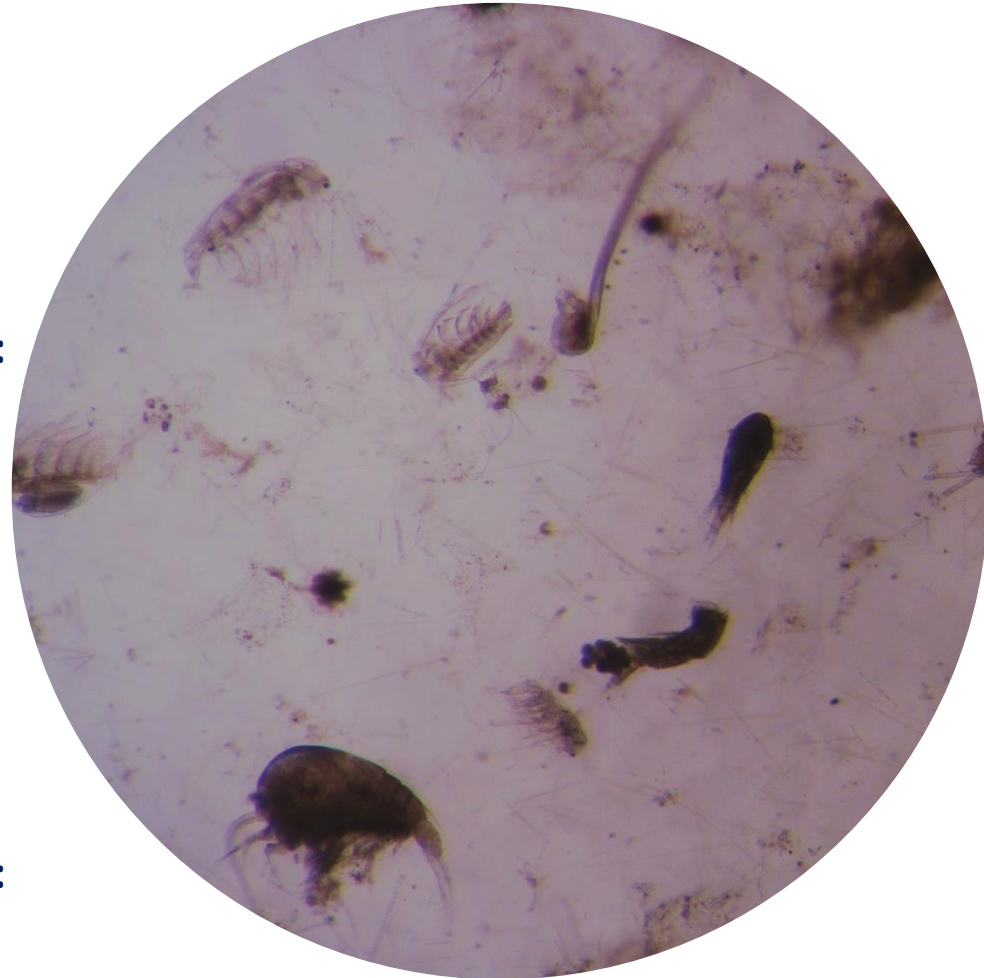
Most abundant taxa :

- cladoceran *Penilia avirostris* (33%)
- copepod assemblage (28%)

Dry mass: 4.2 mg m⁻³

Long-term average (September, 1984-2013):

10.2 ± 4.9 mg m⁻³



Live sample