

## MC 1124

07/10/2014

### Meso-zooplankton abundance:

3852 ind. m<sup>-3</sup>

### Long-term average (October, 1984-2013):

1579 ± 861 ind. m<sup>-3</sup>

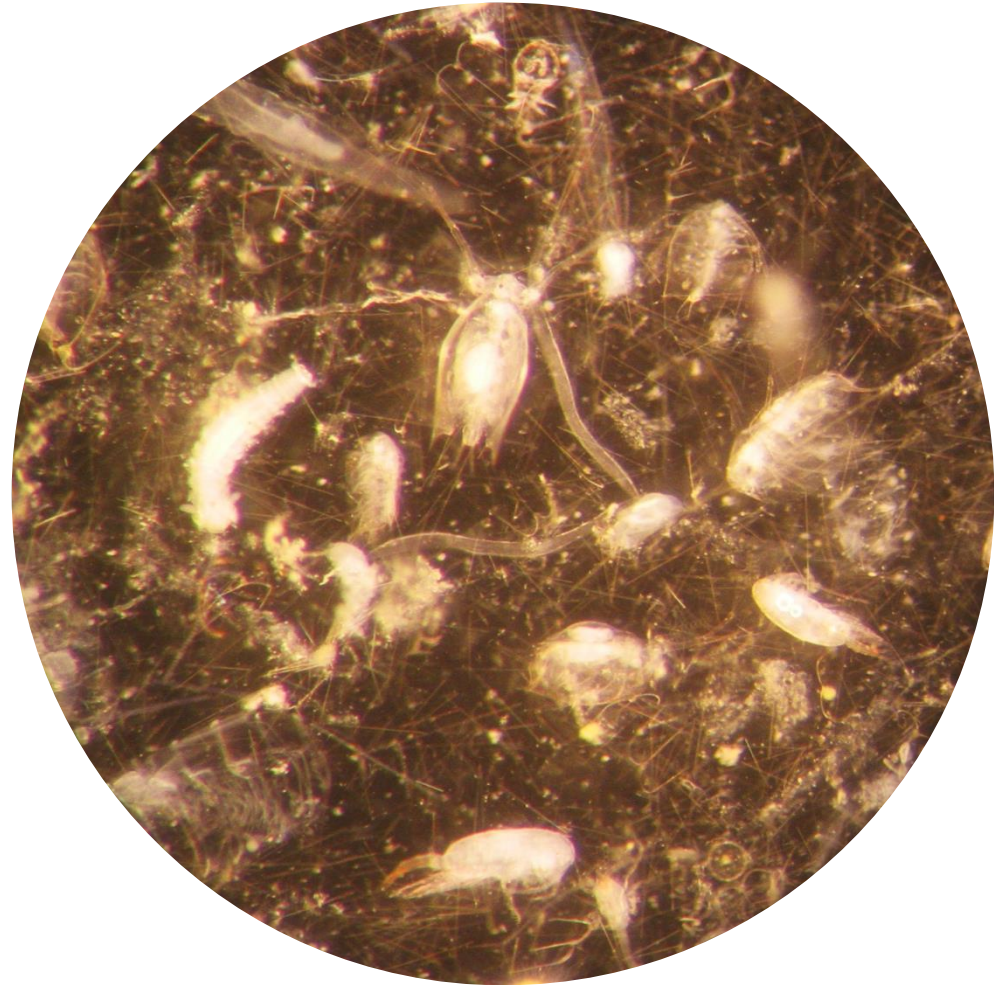
### Most abundant taxa :

- copepod assemblage (32%)
- doliolids (28%)
- cladoceran *Penilia avirostris* (24%)

Dry mass: 5.9 mg m<sup>-3</sup>

### Long-term average (October, 1984-2013):

9.6 ± 4.8 mg m<sup>-3</sup>



Live sample