

MC 1147

31/03/2015

Meso-zooplankton abundance:

1452 ind. m⁻³

Long-term average (March, 1984-2014):

1343 ± 718 ind. m⁻³

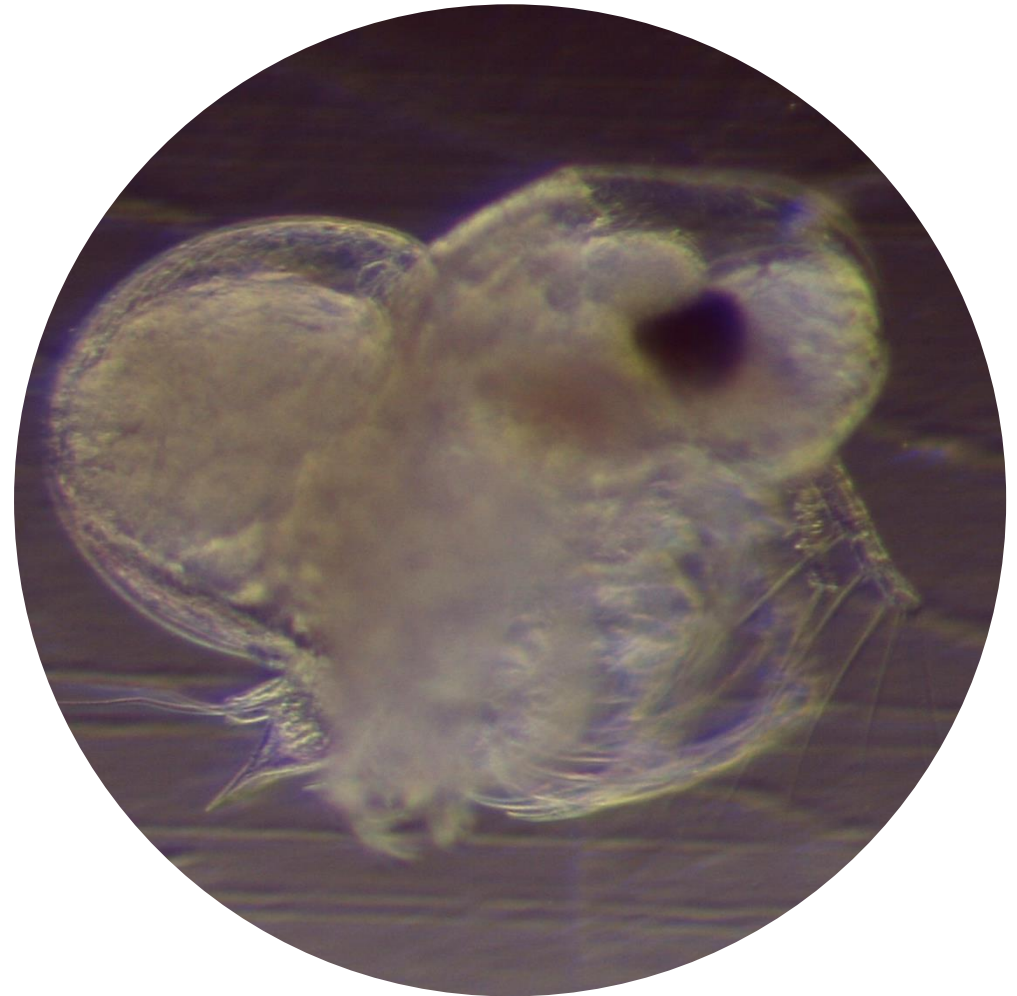
Most abundant taxa :

- copepod *Acartia clausi* (23%)
- euphausiid and decapod larvae (16%),
- cladoceran *Podon intermedius* (2%)

Dry mass: 13.5 mg m⁻³ (weight after 24h)

Long-term average (March, 1984-2014):

8.2 ± 2.9 mg m⁻³



Podon intermedius
female