

MC 1150

21/04/2015

Meso-zooplankton abundance:

831 ind. m⁻³

Long-term average (April, 1984-2014):

1578 ± 923 ind. m⁻³

Most abundant taxa :

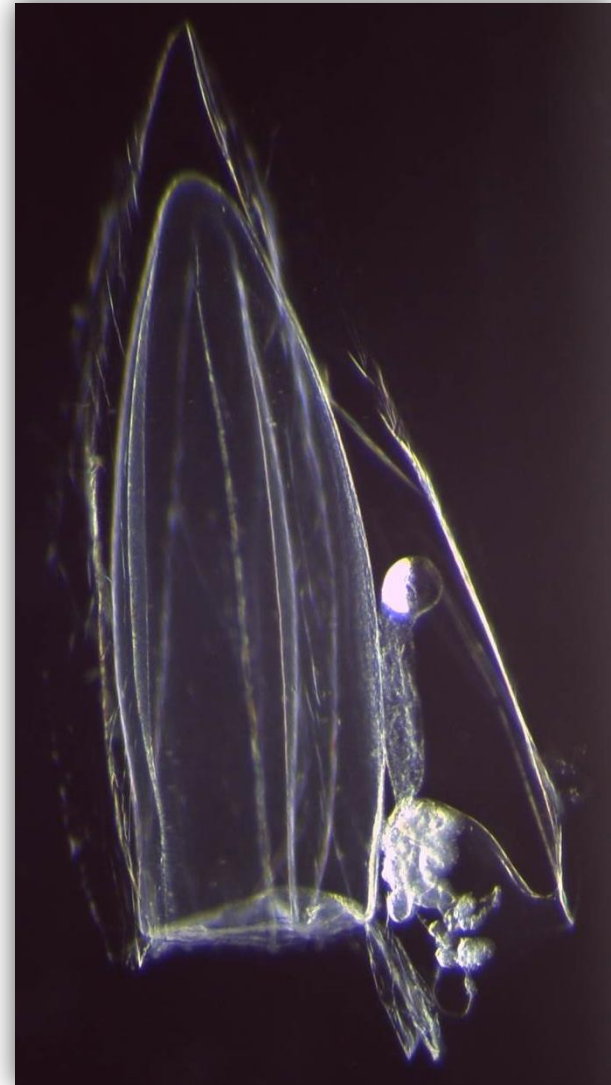
-copepod assemblage (77%)

-appendicularian *Oikopleura* spp. (13%)

Dry mass: 6.2 mg m⁻³ (weight after 24h)

Long-term average (April, 1984-2014):

11.2 ± 5 mg m⁻³



Anterior nectophore of siphonophor
Muggiaea kochii