

Meso-zooplankton abundance:

1083 ind. m⁻³

**Long-term average (April,
1984-2015):** 1625 ± 790 ind.m⁻³

Most abundant taxa :

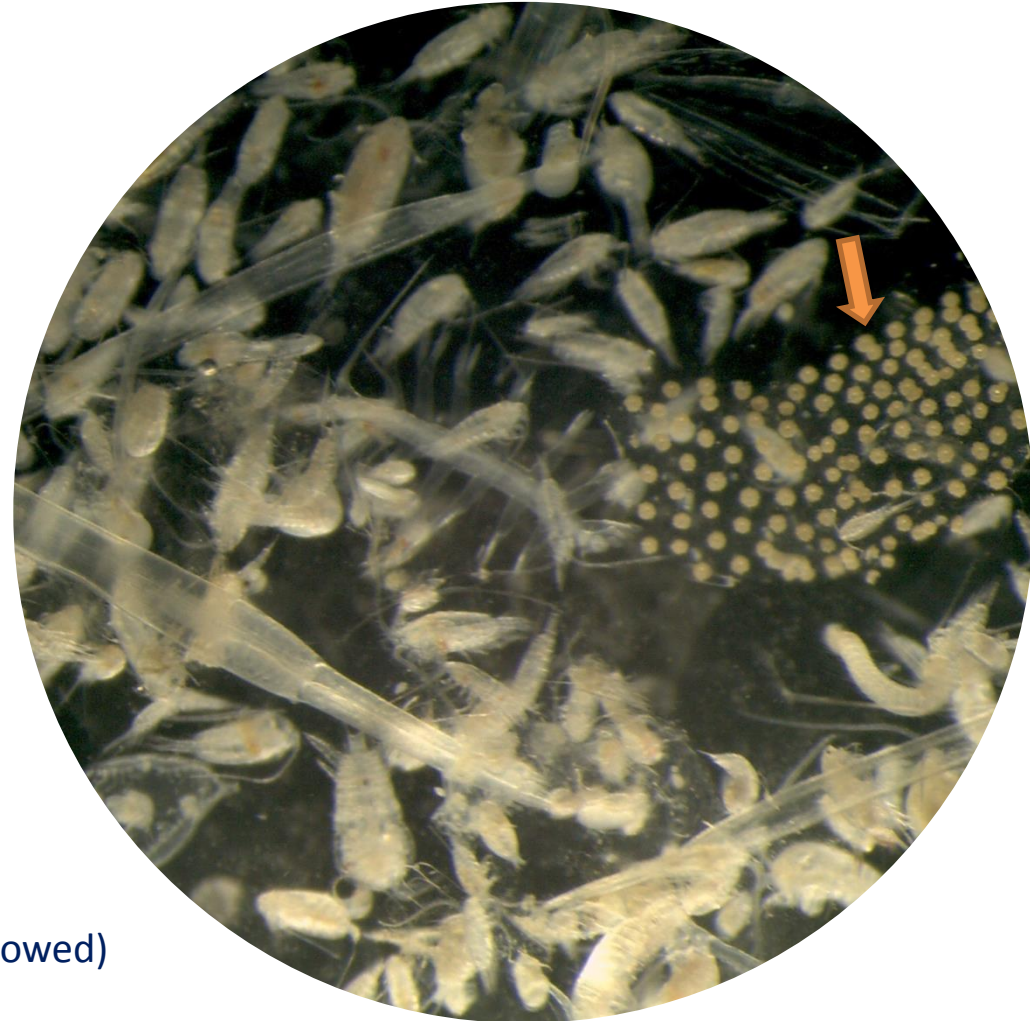
- copepod assemblage (76%)
- larvaceans (15%)

Dry mass: 11.4 mg m⁻³

Long-term average (April, 1984-2015):
11 ± 5 mg m⁻³

Note: Colonial radiolaria *Collozoum* spp. (arrowed)

Sample collected with WP2 net



Live sample