

**Meso-zooplankton abundance:**

4890 ind. m<sup>-3</sup>

**Long-term average (June,  
1984-2015):** 2007 ± 962 ind.m<sup>-3</sup>

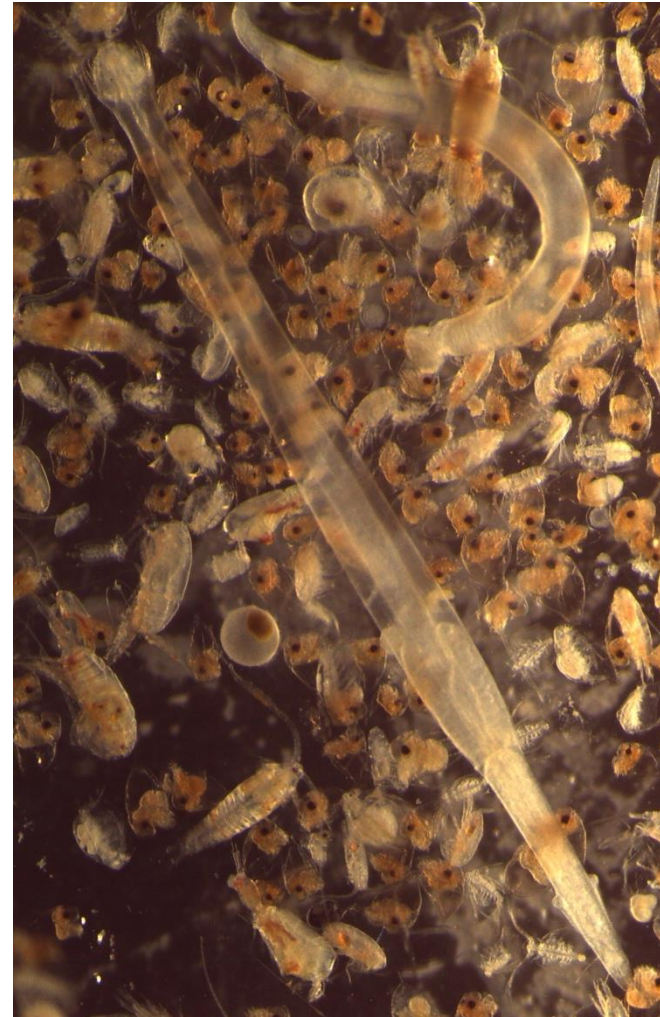
**Most abundant taxa :**

- Cladocerans: *Pseudevadne tergestina* (32%),  
*Penilia avirostris* (32 %), *Evadne spinifera* (12%)
- Copepod: *Centropages typicus* (2%)

**Dry mass:** 19.2 mg m<sup>-3</sup>

**Long-term average (June, 1984-2015):**  
10.3 ± 4 mg m<sup>-3</sup>

**Note:** Sample collected with WP2 net



**Live sample**