

Meso-zooplankton abundance:

2243 ind. m⁻³

Long-term average (June,

1984-2015): 2007 ± 962 ind.m⁻³

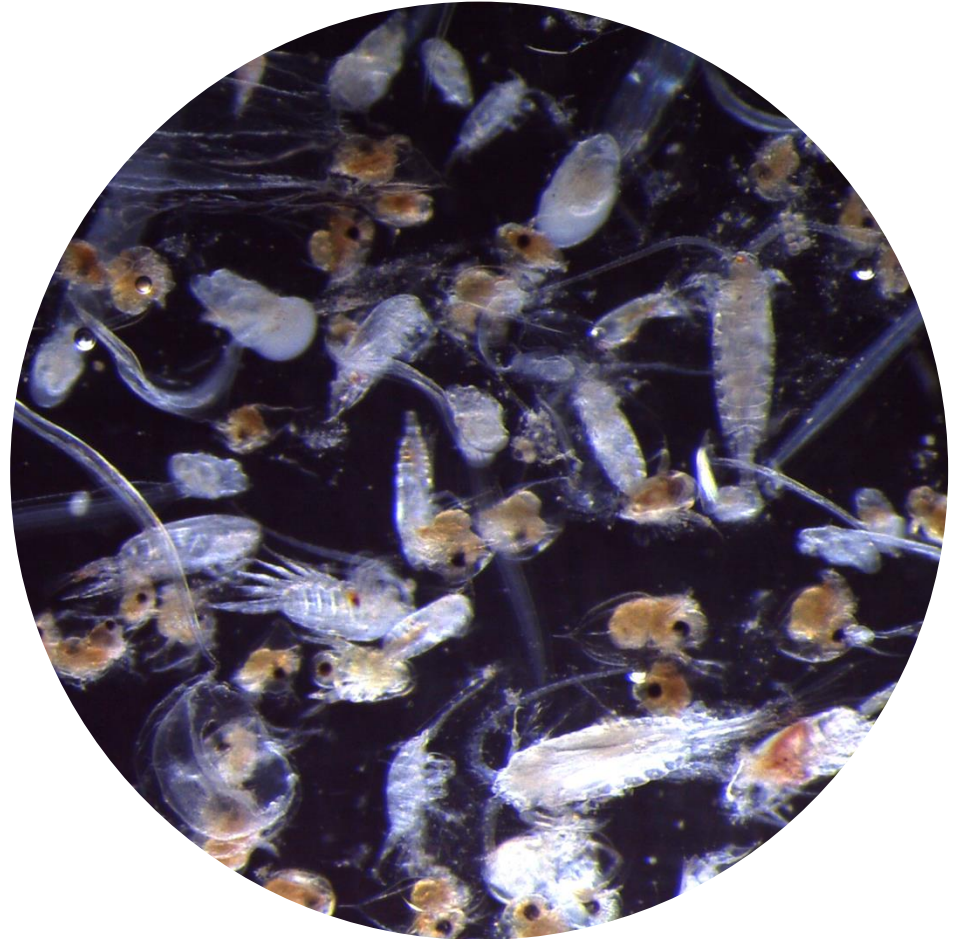
Most abundant taxa :

- Copepod assemblages (12%)
- Cladocerans (85%)
- Appendicularians (2 %)

Dry mass: 5.7 mg m⁻³

Long-term average (June, 1984-2016):

10.3 ± 4 mg m⁻³



Live sample