

Meso-zooplankton abundance:

814 ind. m⁻³

Long-term average (December, 1984-2017):

667 ± 255 ind.m⁻³

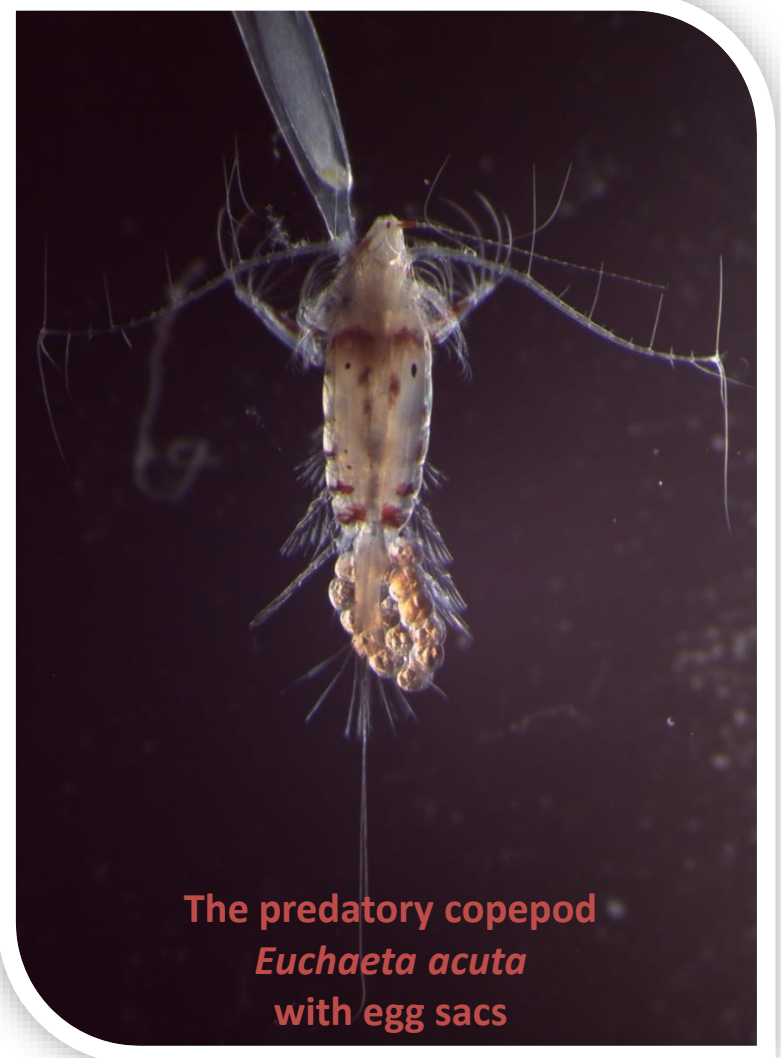
Most abundant taxa :

- Copepods (75%)

Dry mass: 10.4 mg m⁻³

Long-term average (December, 1984-2018):

5.2. ± 2.2 mg m⁻³



The predatory copepod
Euchaeta acuta
with egg sacs