

MC 1074

02/10/2013

Phytoplankton abundance:

$3,9 \times 10^3$ cells ml⁻¹

Phytoplankton groups percentage:

flagellates: 55%, diatoms: 42%,
dinoflagellates: 2%, coccolithophores: 1%

Most abundant diatoms:

Thalassiosira cf. *allenii* (10,7%)

Skeletonema menzelii (6,9%)

Pseudo-nitzschia multistriata (4,8%)

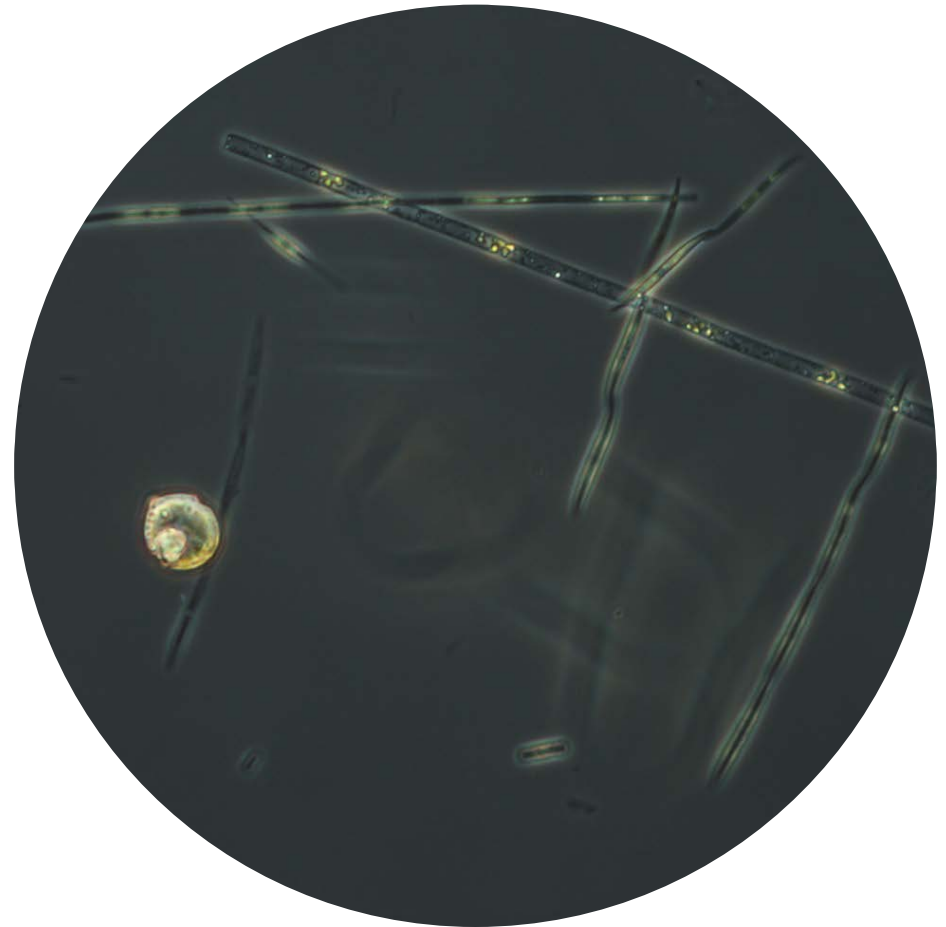
Most abundant species in net sample:

Pseudo-nitzschia multistriata

Thalassionema nitzschioides

Tenuicylindrus minimus

Notes: preliminary quantitative analysis



Live sample