

MC 1080

13/11/2013

Phytoplankton abundance:

$3,4 \times 10^3$ cells ml⁻¹

Phytoplankton groups percentage:

flagellates: 61,6%, diatoms: 29%,
coccolithophores: 6,5%, dinoflagellates: 2,9%

Most abundant diatom species:

Skeletonema menzelii (8,4%)

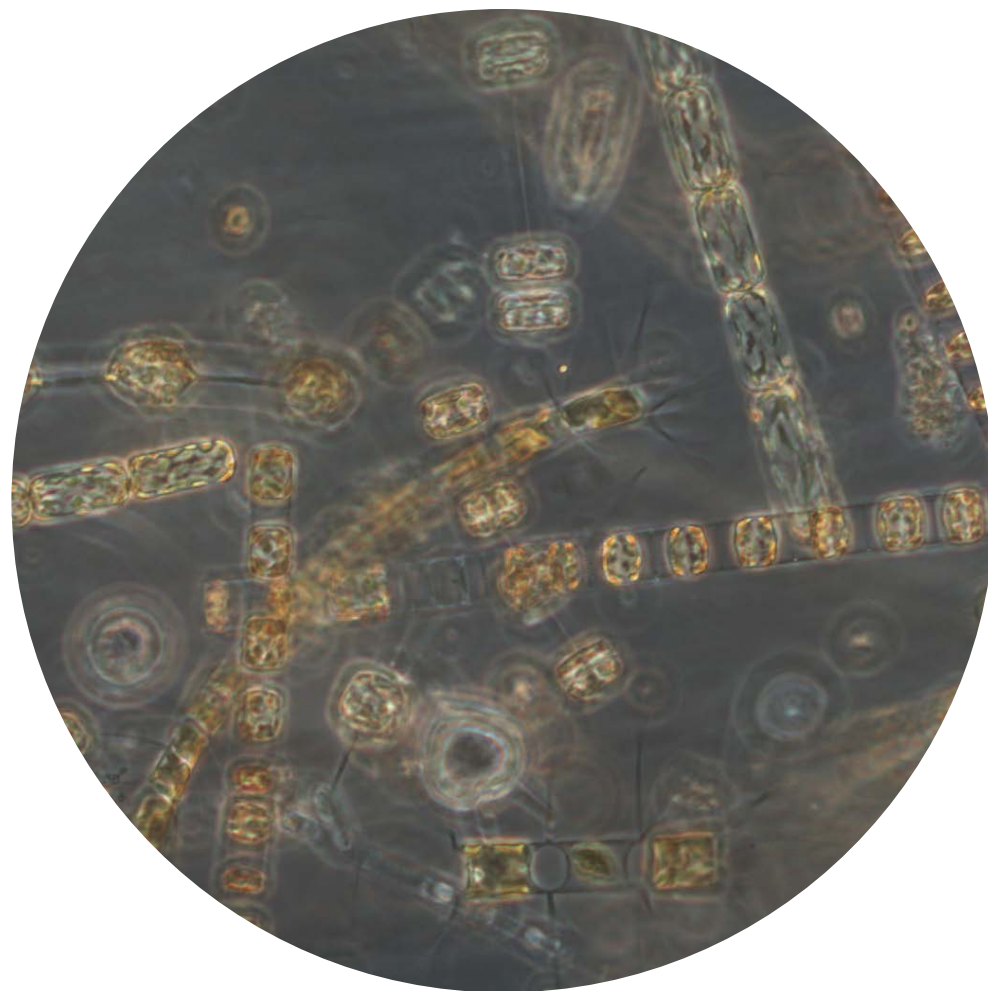
Chaetoceros minimus (2,6%)

Most abundant species in net sample:

Skeletonema tropicum

Thalassiosira rotula

Chaetoceros costatus



Live sample

Notes: preliminary quantitative analysis