

MC 1105

27/05/2014

Phytoplankton abundance:

6.6×10^4 cells ml⁻¹

Phytoplankton groups percentage:

diatoms: 70.0%, flagellates: 26.4%,
dinoflagellates: 2.5%, coccolithophores: 1.1%

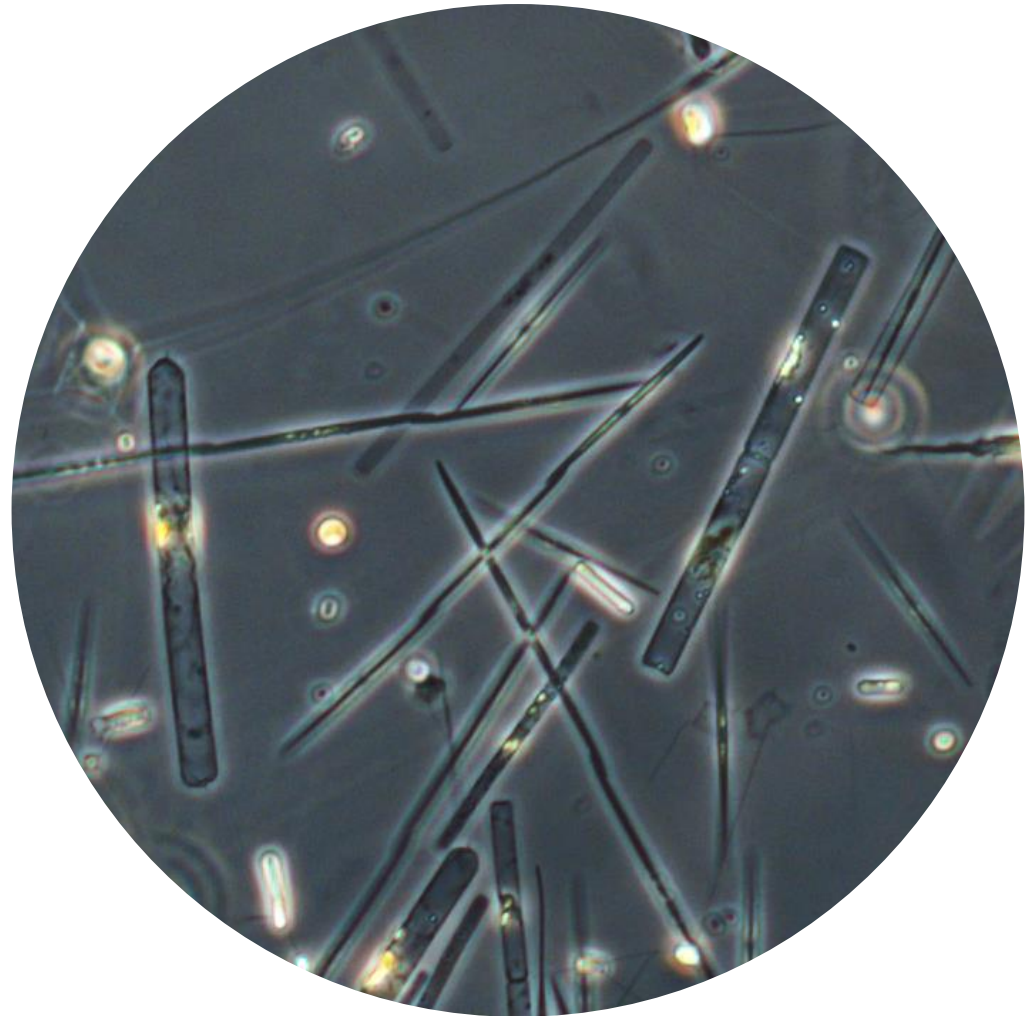
Most abundant taxa:

Chaetoceros sp. single (56,1%)
Pseudo-nitzschia delicatissima (3,35%)
Chaetoceros simplex (2.8%)

Most abundant species in the net sample:

Chaetoceros sp. single
Leptocylindrus danicus
Pseudo-nitzschia delicatissima

Notes: preliminary quantitative analysis



Live sample