

MC 1106

03/06/2014

Phytoplankton abundance:

3.0×10^4 cells ml⁻¹

Phytoplankton groups percentage:

diatoms: 63.0%, flagellates: 32.2%,
dinoflagellates: 1.5%, coccolithophores: 0.9%

Most abundant taxa:

Chaetoceros sp. single (48.9%)

Cyclotella spp. (3.20%)

Pseudo-nitzschia galaxiae (1.8%)

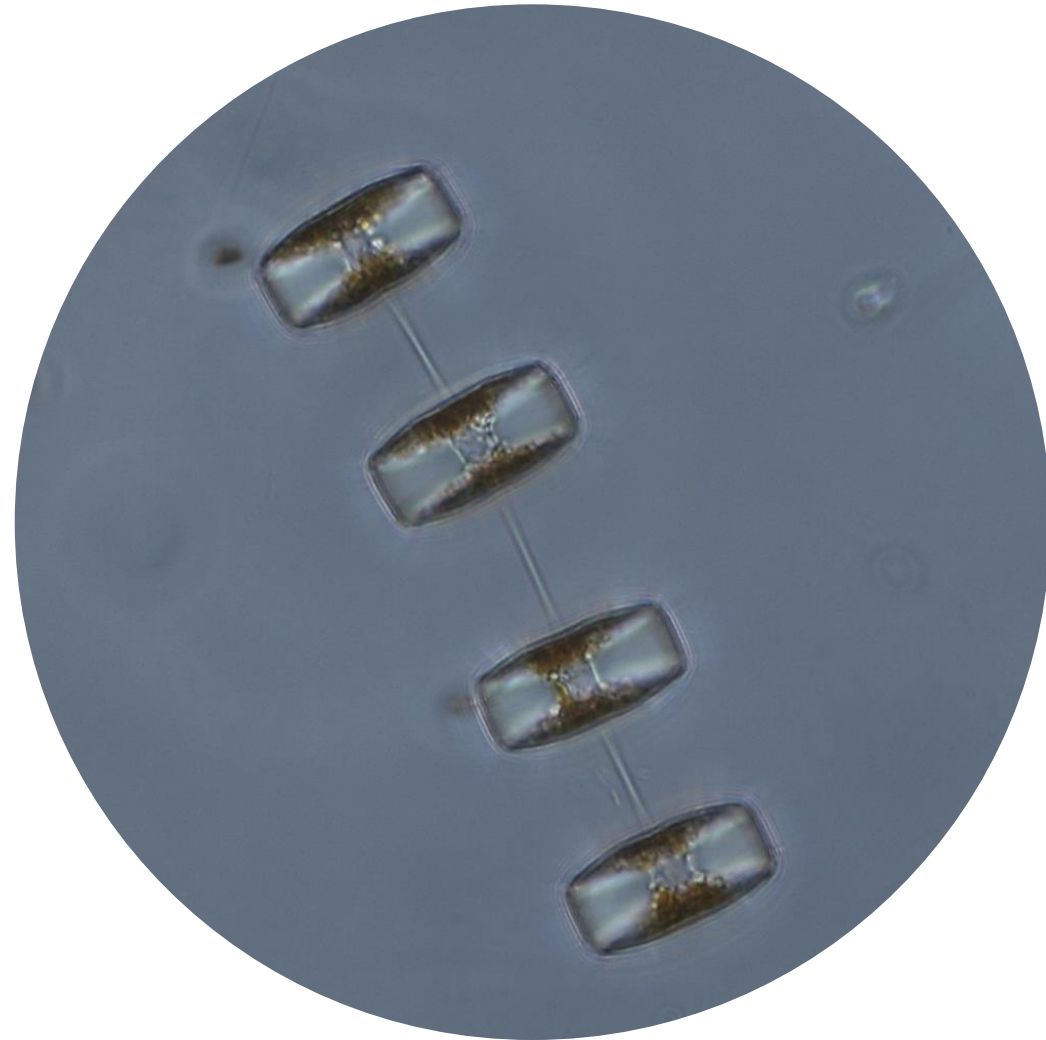
Most abundant species in the net sample:

Chaetoceros sp. single

Chaetoceros simplex

Thalassiosira rotula

Notes: preliminary quantitative analysis



Live sample