

## MC 1121

16/09/2014

### Phytoplankton abundance:

$1.9 \times 10^4$  cells ml<sup>-1</sup>

### Phytoplankton groups percentage:

diatoms: 58.3%, flagellates: 39.8%,  
dinoflagellates: 1.9%, coccolithophores: 0.0%

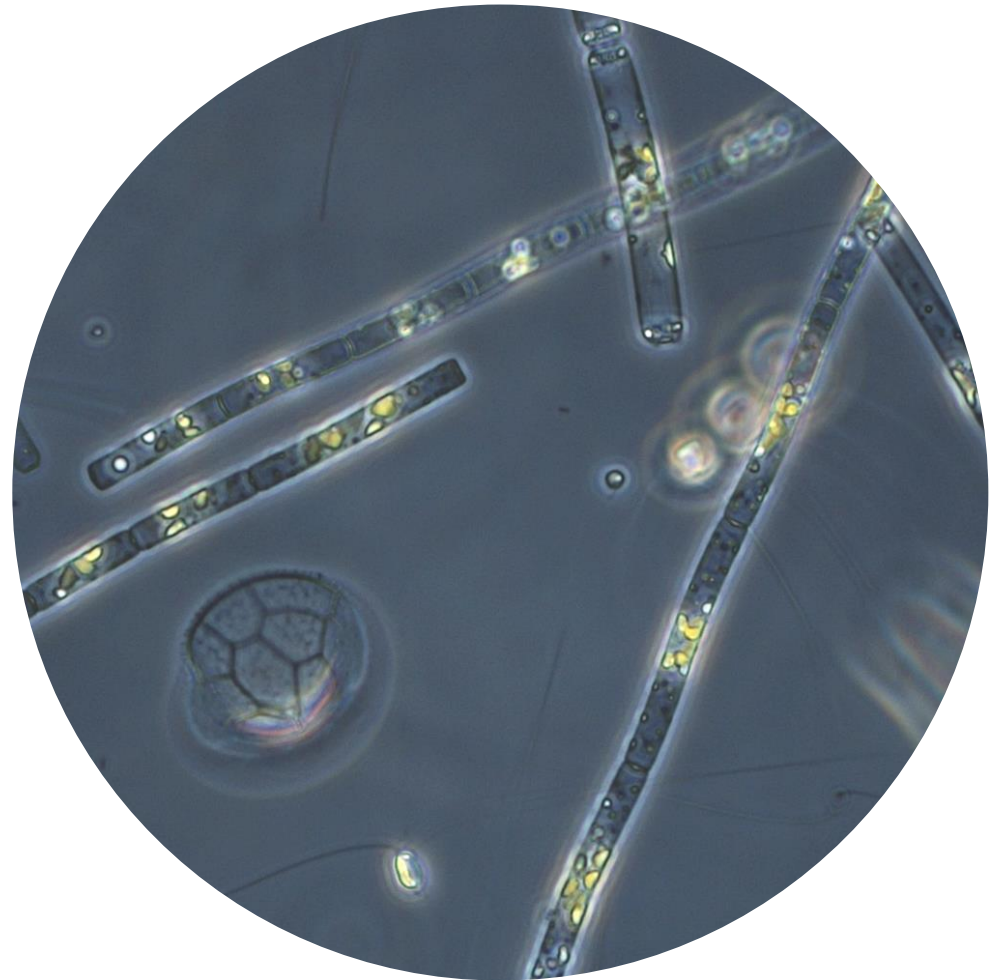
### Most abundant diatom species:

*Leptocylindrus danicus* (15.0%)  
*Chaetoceros* spp. (7.0%)  
*Skeletonema menzelii* (7.6%)

### Most abundant species in the net sample:

*Leptocylindrus danicus*  
*Skeletonema tropicum*  
*Chaetoceros rotosporus*

Notes: preliminary quantitative analysis



Live sample