

## MC 1122

24/09/2014

### Phytoplankton abundance:

$7.0 \times 10^3$  cells ml<sup>-1</sup>

### Phytoplankton groups percentage:

flagellates: 58.3%, diatoms: 39.9%,  
dinoflagellates: 0.9%, coccolithophores: 0.9%

### Most abundant diatom species:

*Leptocylindrus danicus* (22.6%)

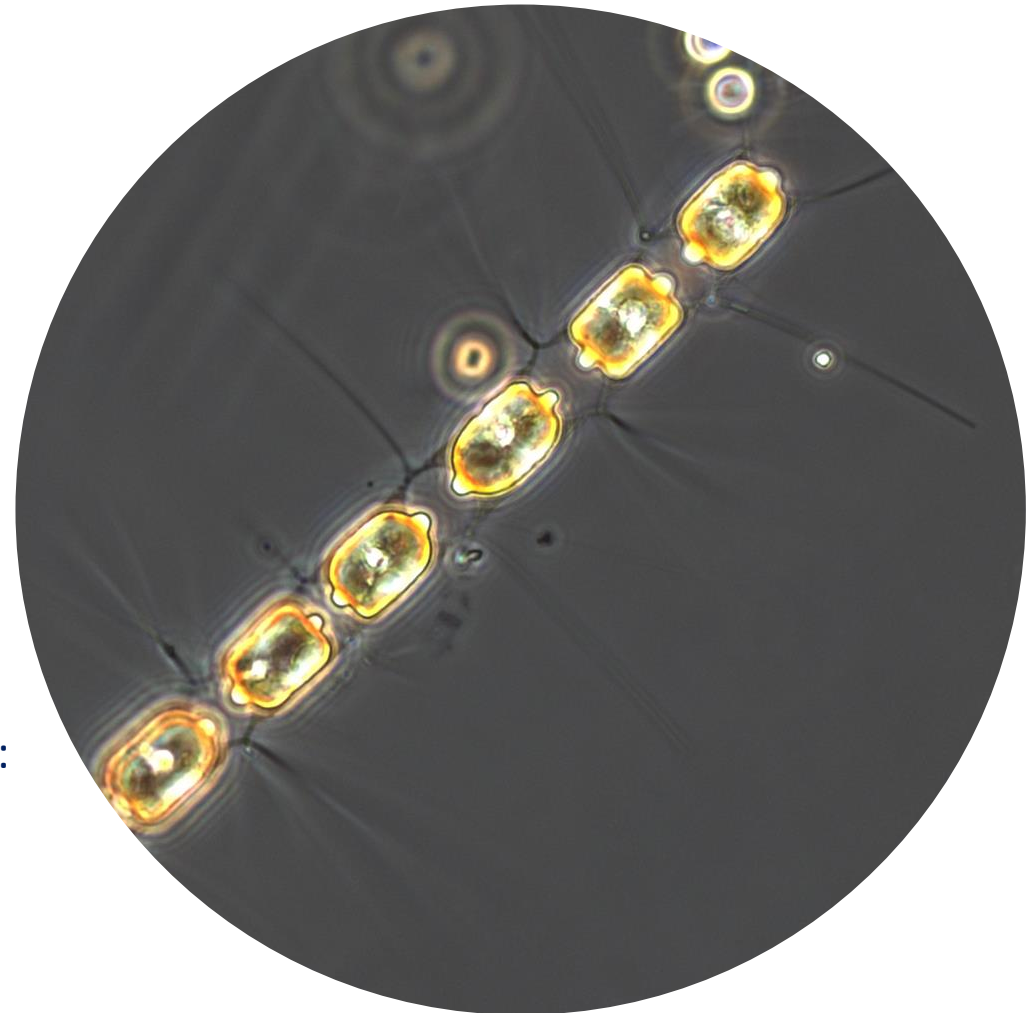
*Chaetoceros socialis* (4.4%)

*Pseudo-nitzschia delicatissima* (2.5%)

### Most abundant species in the net sample:

*Leptocylindrus danicus*

*Pseudo-nitzschia delicatissima*



Notes: preliminary quantitative analysis

Live sample