

## MC 1124

07/10/2014

### Phytoplankton abundance:

$8.0 \times 10^3$  cells ml<sup>-1</sup>

### Phytoplankton groups percentage:

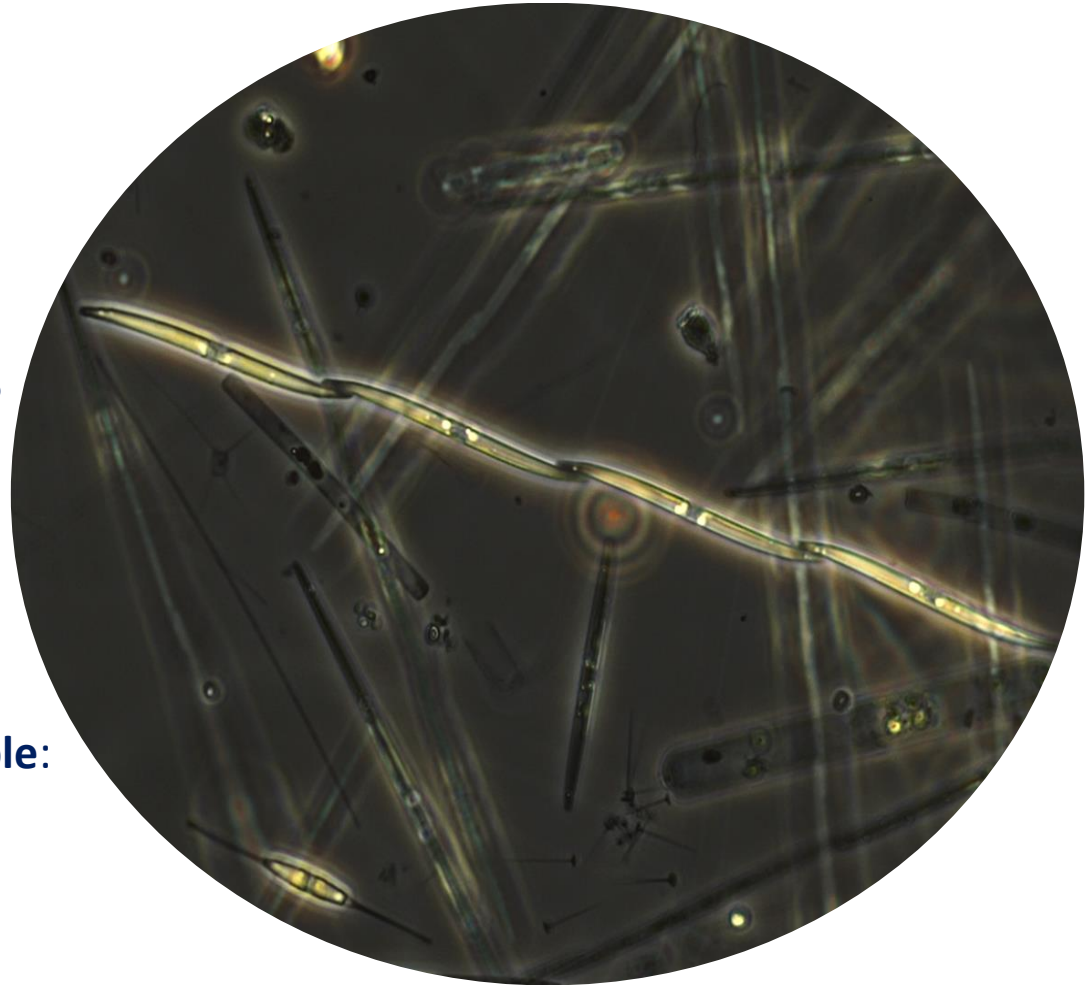
flagellates: 48.0%, diatoms: 47.9%,  
coccolithophores: 3.6%, dinoflagellates: 0.5%

### Most abundant diatom species:

*Chaetoceros tenuissimus* (17.6%)  
*Pseudo-nitzschia delicatissima* (12.2%)  
*Chaetoceros socialis* (4.1%)

### Most abundant species in the net sample:

*Leptocylindrus danicus*  
*Pseudo-nitzschia delicatissima*



Notes: preliminary quantitative analysis

Live sample