

MC 1125

14/10/2014

Phytoplankton abundance:

1.2×10^4 cells ml⁻¹

Phytoplankton groups percentage:

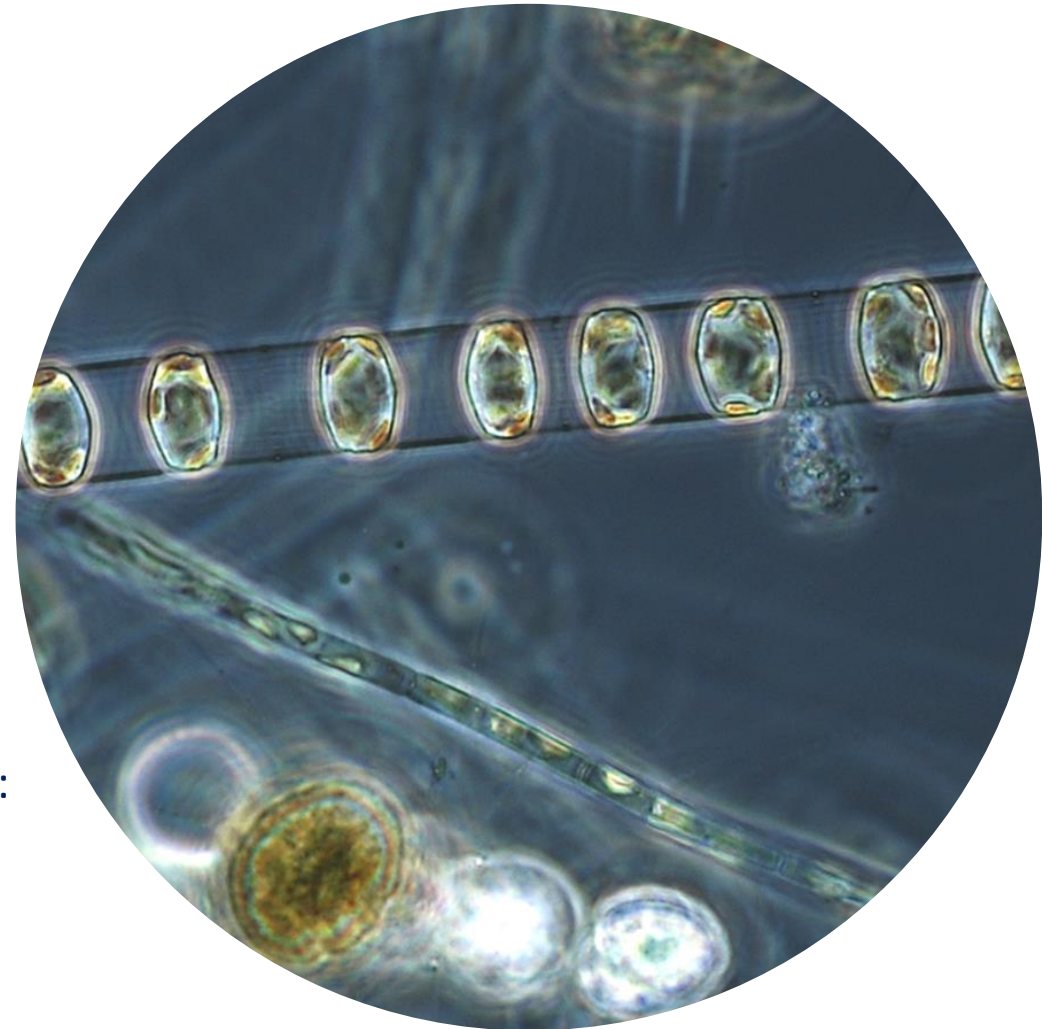
flagellates: 52.0%, diatoms: 44.0%,
coccolithophores: 3.3%, dinoflagellates: 0.7%

Most abundant diatom species:

Thalassiosira cf. *oceanica* (20.44%)
Skeletonema menzelii (7.9%)
Pseudo-nitzschia delicatissima (3.7%)

Most abundant species in the net sample:

Thalassiosira cf. *oceanica*
Leptocylindrus danicus
Pseudo-nitzschia delicatissima



Live sample