

MC 1126

21/10/2014

Phytoplankton abundance:

1.6×10^4 cells ml⁻¹

Phytoplankton groups percentage:

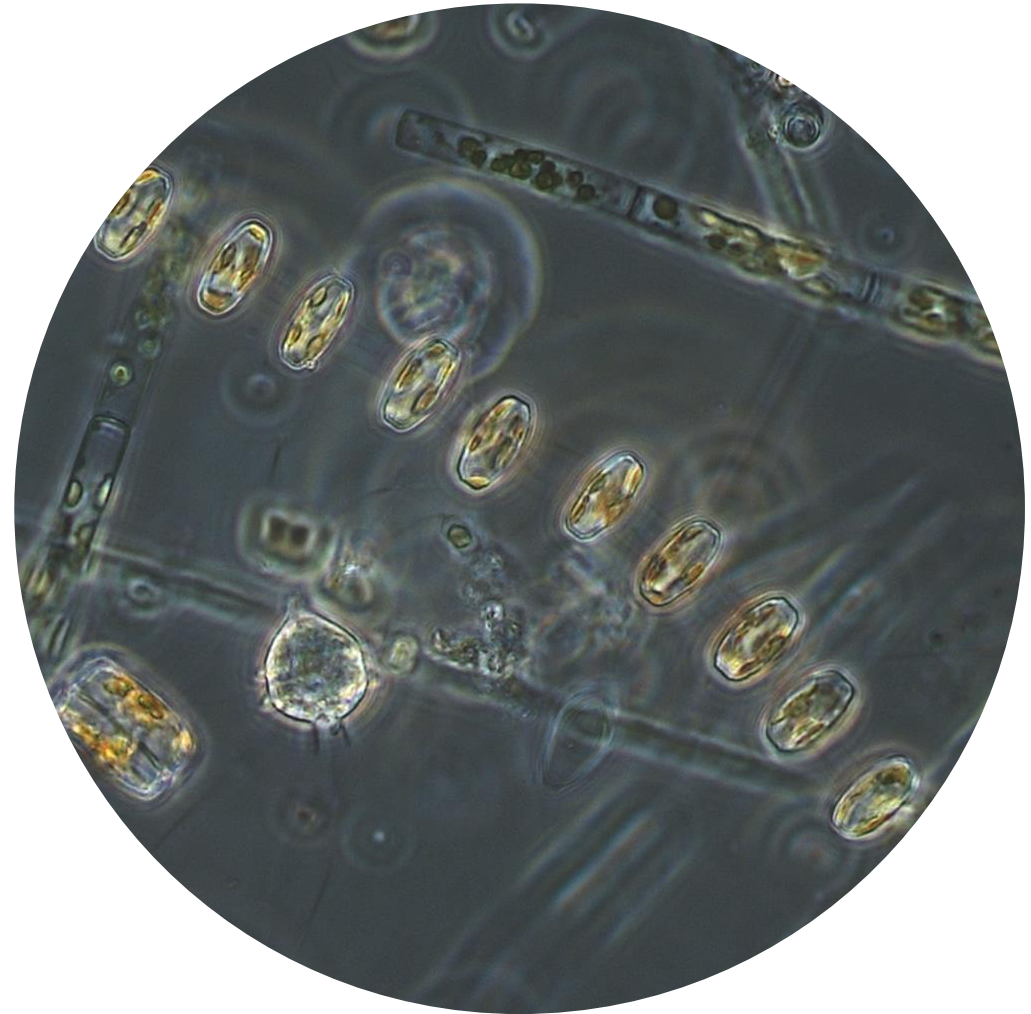
diatoms: 59.3%, flagellates: 25.3%,
coccolithophores: 1.4%, dinoflagellates: 1.4%

Most abundant diatom species:

Chaetoceros spp. single (18.7%)
Chaetoceros socialis (11.5%)
Thalassiosira cf. *oceanica* (4.6%)

Most abundant species in the net sample:

Thalassiosira cf. *oceanica*
Leptocylindrus danicus
Pseudo-nitzschia delicatissima



Live sample

Notes: preliminary quantitative analysis