

MC 1127

28/10/2014

Phytoplankton abundance:

6.5×10^3 cells ml⁻¹

Phytoplankton groups percentage:

flagellates: 84.3%, diatoms: 10.6%,
coccolithophores: 3.4%, dinoflagellates: 1.7%

Most abundant diatom species:

Leptocylindrus convexus (1.7%)

Leptocylindrus danicus (2.0%)

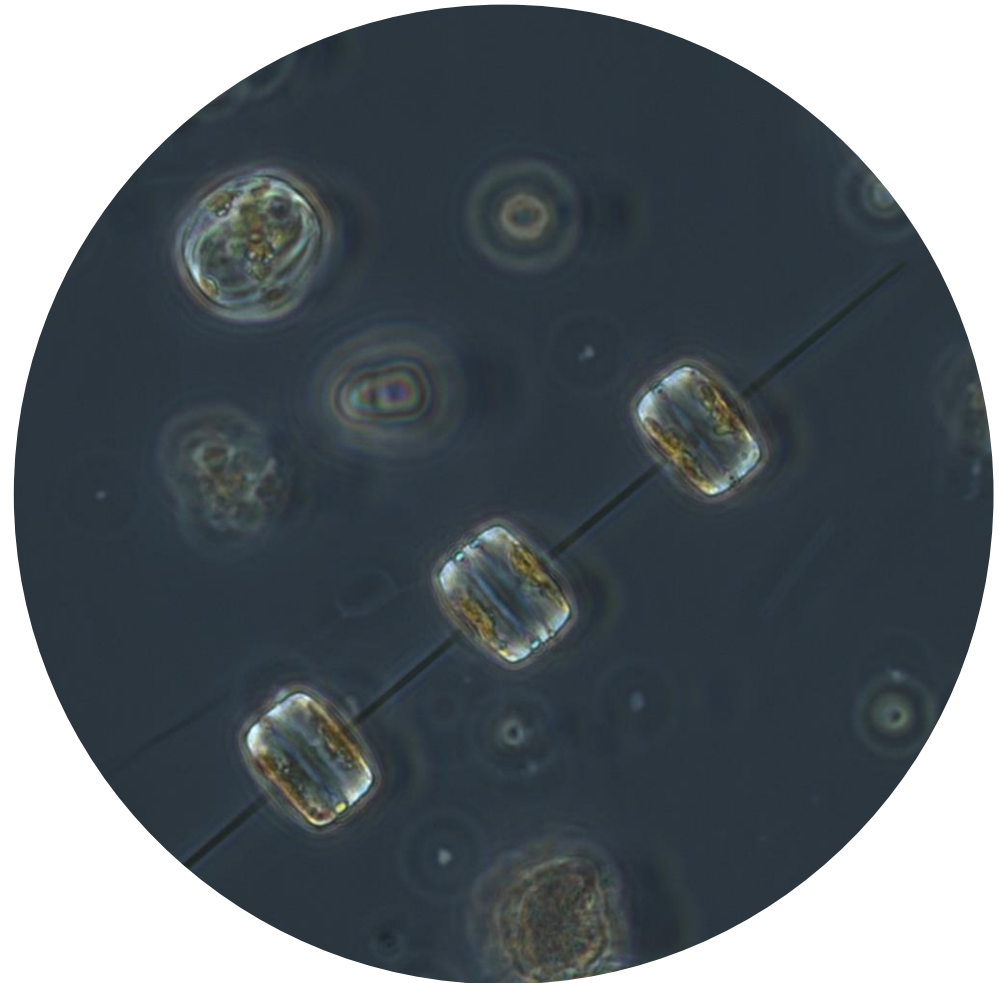
Pseudo-nitzschia delicatissima (1.4%)

Most abundant species in the net sample:

Leptocylindrus danicus

Pseudo-nitzschia delicatissima

Proboscia alata



Notes: preliminary quantitative analysis

Live sample