

MC 1146

24/03/2015

Phytoplankton abundance:

1.6×10^4 cells ml⁻¹

Phytoplankton groups percentage:

diatoms: 63.9%, flagellates: 53.7%,
coccolithophores: 0.8%, dinoflagellates: 0.5%

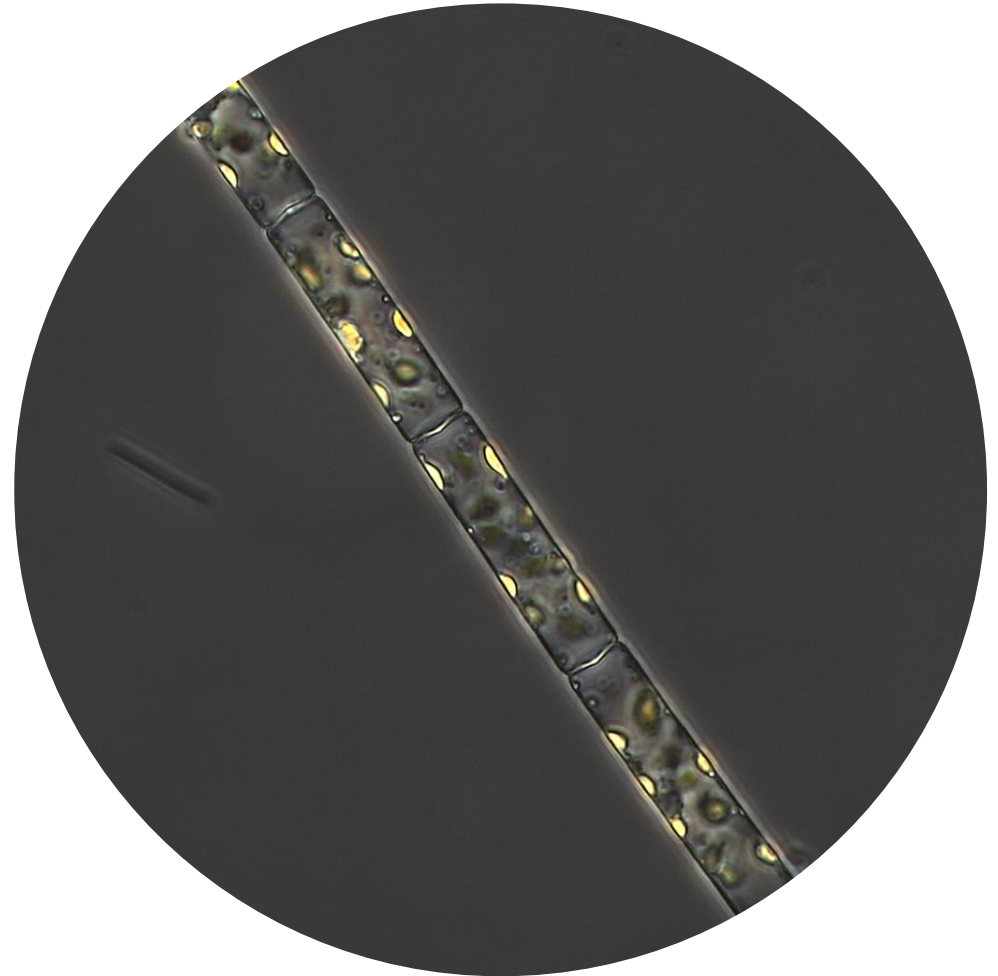
Most abundant diatom species:

Pseudo-nitzschia galaxiae (27.7%)
Pseudo-nitzschia delicatissima (11.5%)
Chaetoceros tenuissimus (8.0%)

Most abundant species in the net sample:

Pseudo-nitzschia galaxiae
Pseudo-nitzschia delicatissima
Leptocylindrus danicus

NOTES: *Preliminary quantitative analysis*



Live sample.

Species in the picture: Leptocylindrus danicus