

## MC 1147

31/03/2015

### Phytoplankton abundance:

$5.0 \times 10^3$  cells ml<sup>-1</sup>

### Phytoplankton groups percentage:

flagellates: 74.2%, diatoms: 21.7%,  
dinoflagellates: 3.1%, coccolithophores: 1.1%

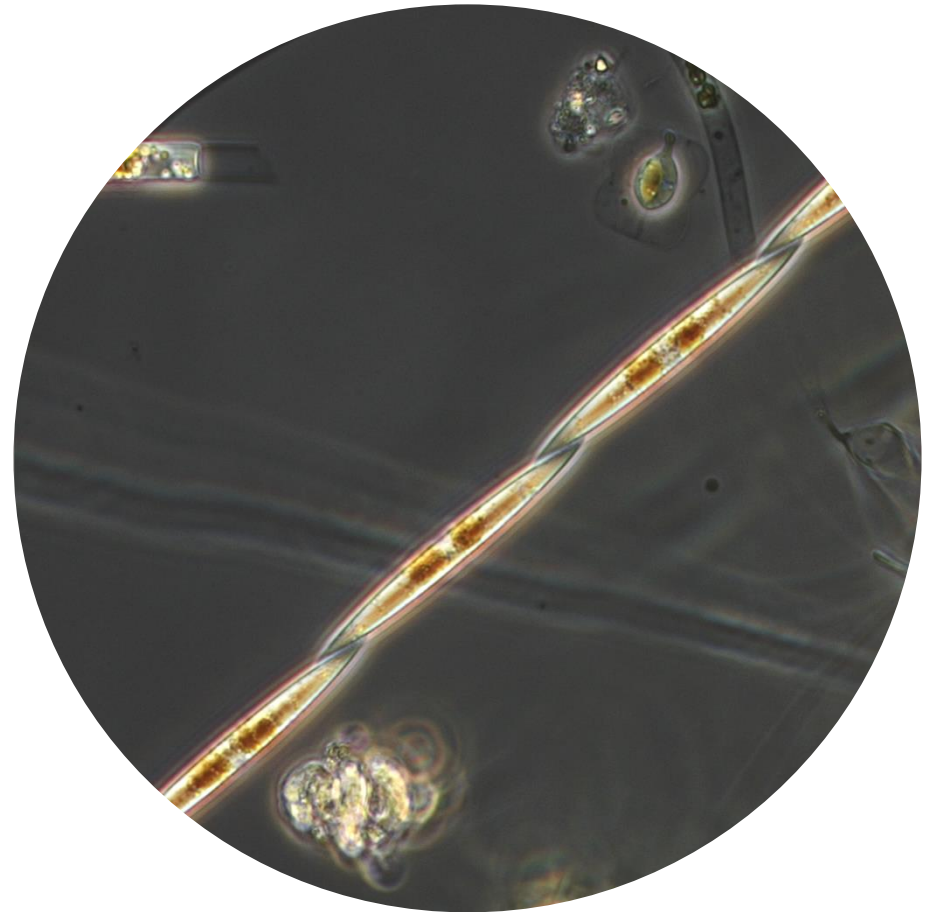
### Most abundant diatom species:

*Pseudo-nitzschia galaxiae* (4.0%)  
*Chaetoceros costatus* (3.3%)  
*Chaetoceros tenuissimus* (2.6%)

### Most abundant species in the net sample:

*Pseudo-nitzschia pseudodelicatissima*  
*Chaetoeros contortus*  
*Chaetoeros curvisetus*

### NOTES:



Live sample.

Species in the picture: *Pseudo-nitzschia fraudulenta*