

MC 1148

06/04/2015

Phytoplankton abundance:

7.3×10^3 cells ml⁻¹

Phytoplankton groups percentage:

flagellates: 62.2%, diatoms: 35.8%,
dinoflagellates: 1.5%, coccolithophores: 0.5%

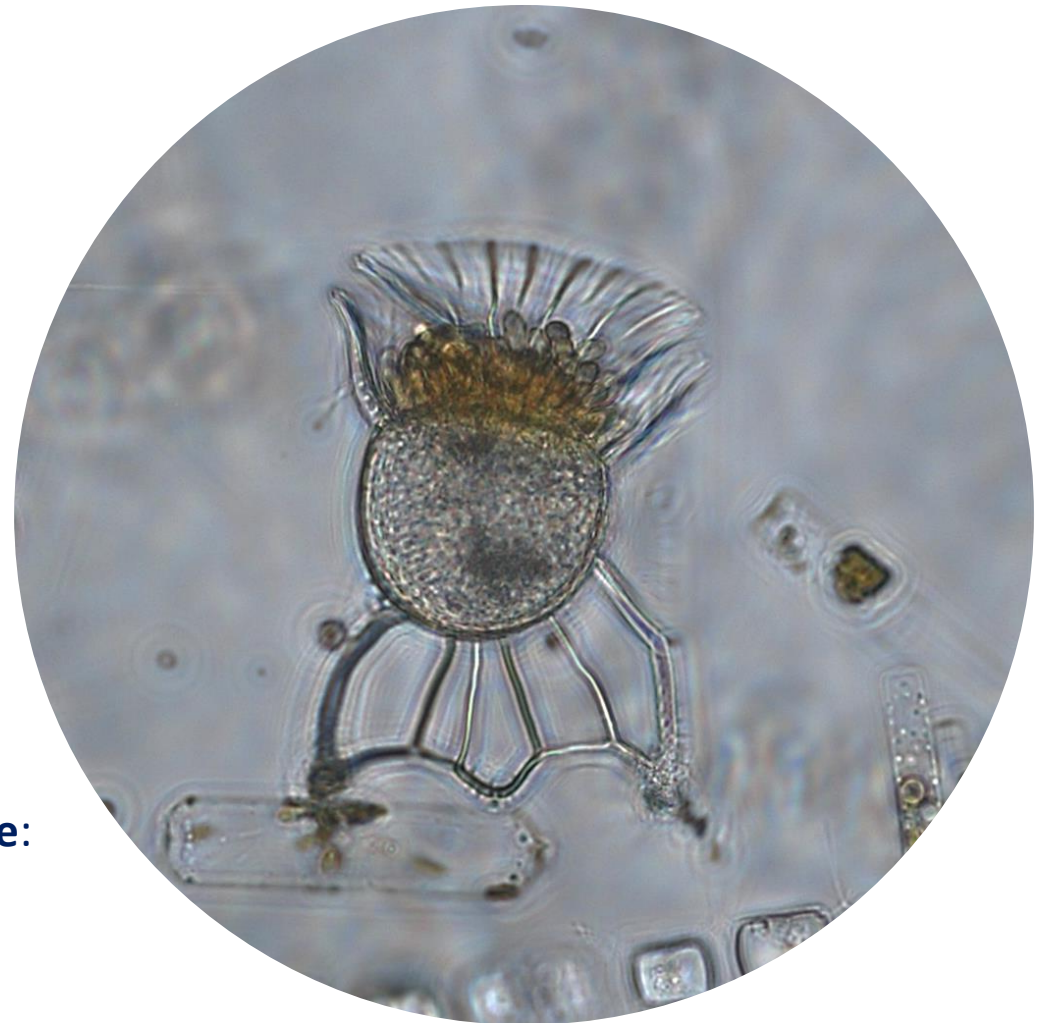
Most abundant diatom species:

Pseudo-nitzschia galaxiae (8.2%)
Chaetoceros contortus (8.2%)
Chaetoceros vixvisibilis (5.4%)

Most abundant species in the net sample:

Chaetoceros contortus
Pseudo-nitzschia fraudulenta

NOTES:



Live sample.

Species in the picture: *Ornithocercus magnificus*