

## MC 1149

14/04/2015

### Phytoplankton abundance:

$1.5 \times 10^4$  cells ml<sup>-1</sup>

### Phytoplankton groups percentage:

diatoms: 53.2%, flagellates: 44.6%,  
dinoflagellates: 1.6%, coccolithophores: 0.6%

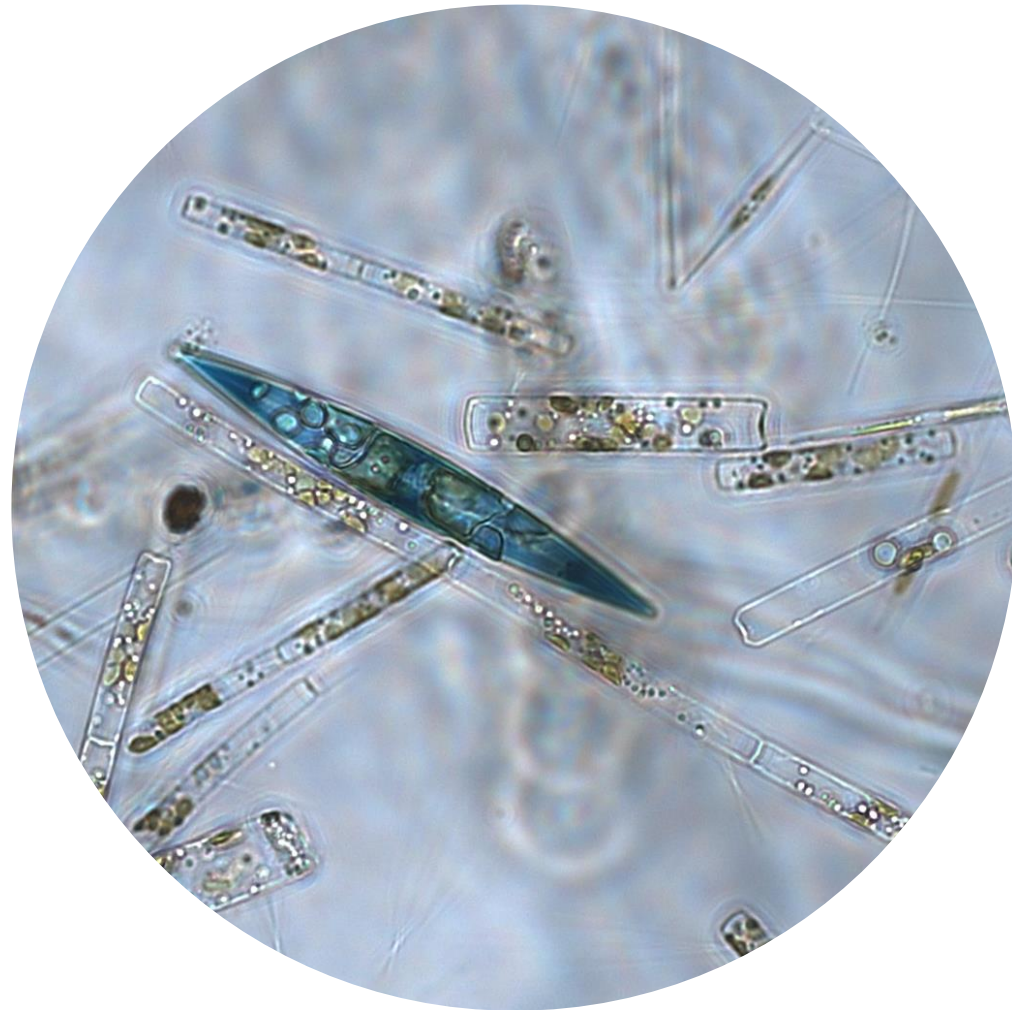
### Most abundant diatom species:

*Pseudo-nitzschia galaxiae* (20.4%)  
*Chaetoceros contortus* (15.8%)  
*Leptocylindrus danicus* (4.0%)

### Most abundant species in the net sample:

*Chaetoceros contortus*  
*Pseudo-nitzschia fraudulenta*  
*Leptocylindrus danicus*

**NOTES:** *Preliminary quantitative analysis*



Live sample.

*Species in the picture: Haslea sp. and Leptocylindrus danicus.*