

MC 1150

21/04/2015

Phytoplankton abundance:

1.0×10^4 cells ml⁻¹

Phytoplankton groups percentage:

diatoms: 58.9%, flagellates: 37.6%,
dinoflagellates: 2.6%, coccolithophores: 0.9%

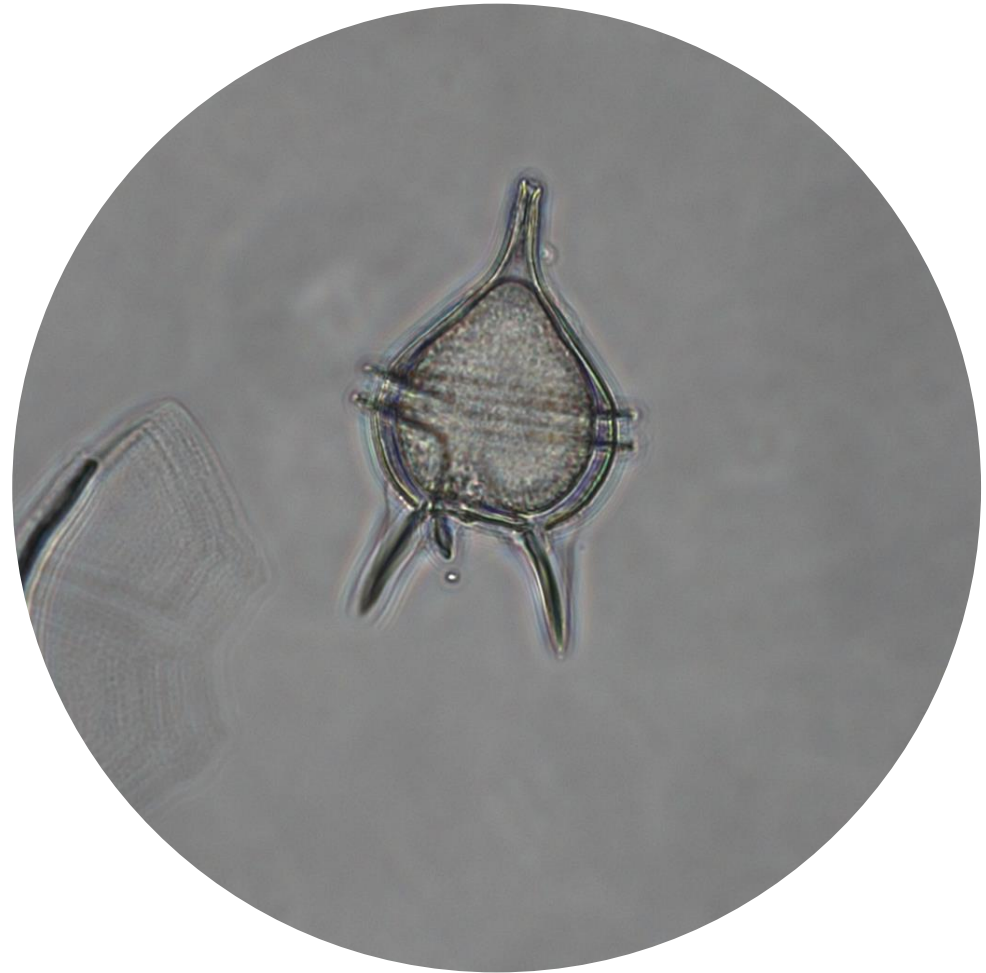
Most abundant diatom species:

Chaetoceros socialis (25.7%)
Leptocylindrus danicus (10.1%)
Chaetoceros tenuissimus (2.6%)

Most abundant species in the net sample:

Leptocylindrus danicus
Pseudo-nitzschia galaxiae
Chaetoceros contortus

NOTES: Preliminary quantitative analysis



Live sample.

Species in the picture: *Protoperidinium diabolus*.