

MC 1151

05/05/2015

Phytoplankton abundance:

4.9×10^4 cells ml⁻¹

Phytoplankton groups percentage:

diatoms: 39.9%, flagellates: 37.6%,
dinoflagellates: 3.0%, coccolithophores: 1.7%

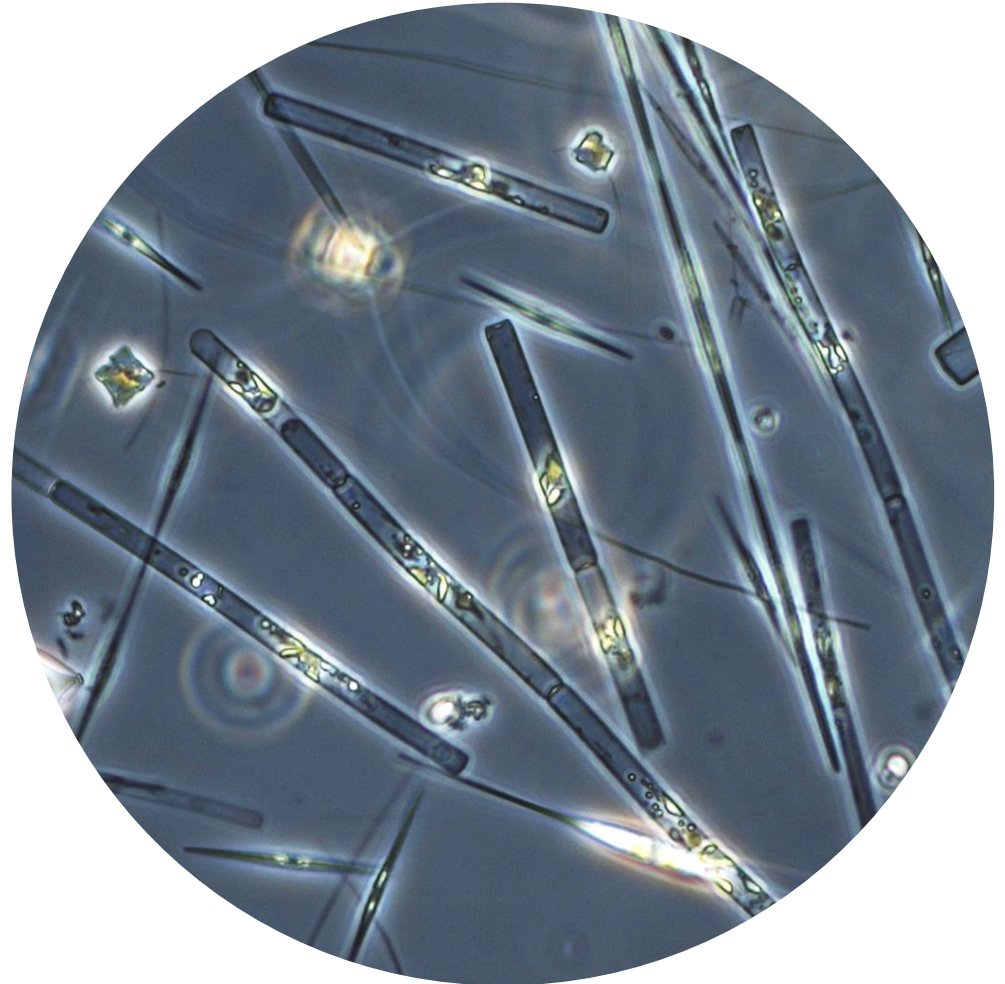
Most abundant diatom species:

Pseudo-nitzschia galaxiae (17.4%)
Leptocylindrus danicus (7.9%)
Chaetoceros tenuissimus (2.6%)

Most abundant species in the net sample:

Leptocylindrus danicus
Pseudo-nitzschia galaxiae
Chaetoceros diversus

NOTES: Preliminary quantitative analysis



Live sample.

Main species in the picture: *Leptocylindrus danicus*
and *Pseudo-nitzschia galaxiae*.