

MC 1152

12/05/2015

Phytoplankton abundance:

2.4×10^4 cells ml⁻¹

Phytoplankton groups percentage:

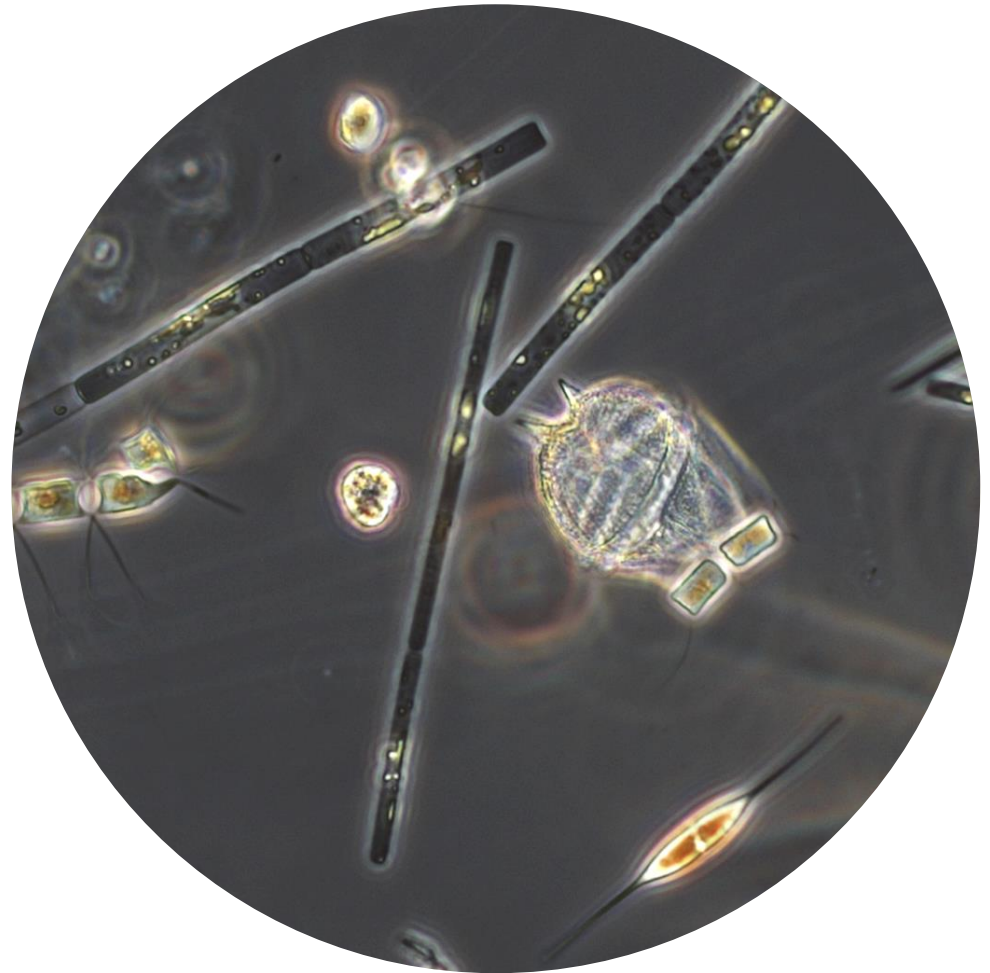
diatoms: 56.0%, flagellates: 41.7%,
dinoflagellates: 1.9%, coccolithophores: 0.4%

Most abundant diatom species:

Chaetoceros socialis (8.9%)
Chaetoceros curvisetus (6.9%)
Leptocylindrus danicus (5.0%)

Most abundant species in the net sample:

Chaetoceros curvisetus
Leptocylindrus danicus
Pseudo-nitzschia galaxiae



Live sample.

NOTES: Preliminary quantitative analysis

Main species in the picture: *Leptocylindrus convexus*, *Cylindrotheca closterium*
and *Gonyaulax* sp.