

MC 1153

19/05/2015

Phytoplankton abundance:

2.3×10^4 cells ml⁻¹

Phytoplankton groups percentage:

flagellates: 55.5%, diatoms: 47.0%,
dinoflagellates: 2.0%, coccolithophores: 0.8%

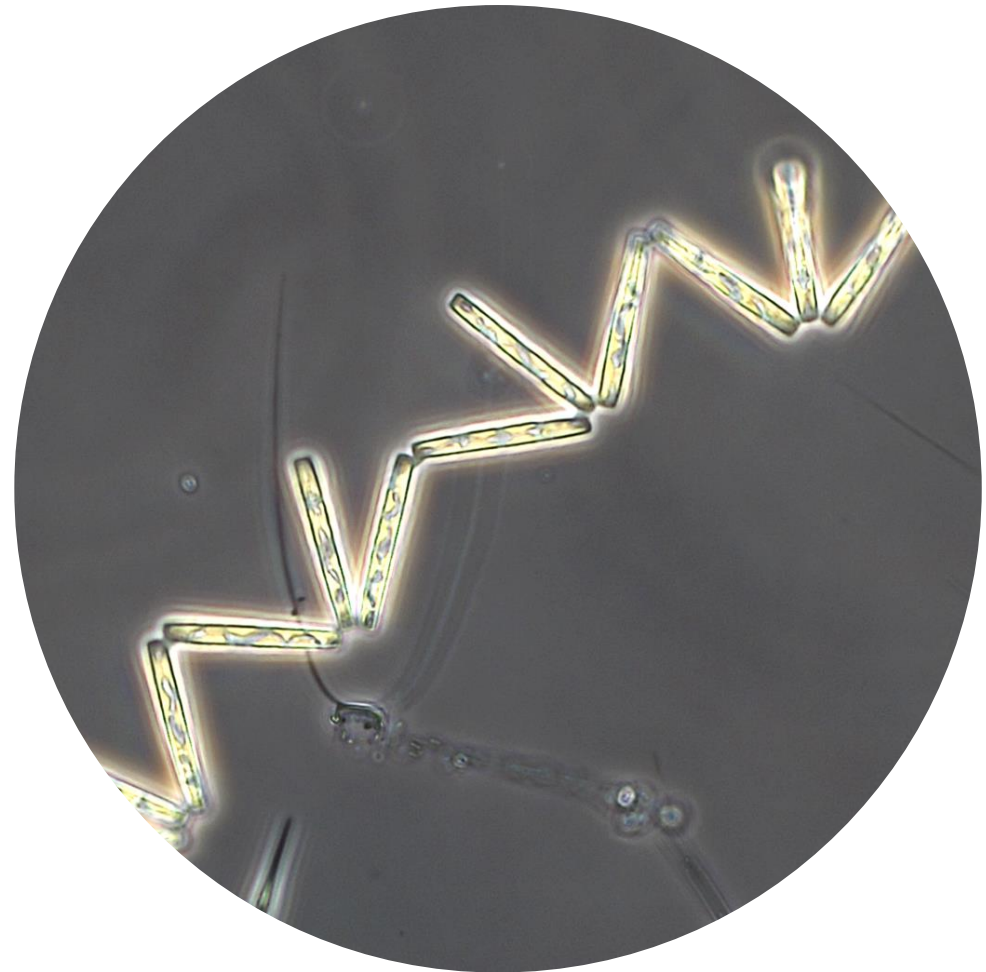
Most abundant diatom species:

Skeletonema pseudocostatum (27.7%)
Leptocylindrus danicus (4.5%)
Chaetoceros tenuissimus (3.0%)

Most abundant species in the net sample:

Leptocylindrus danicus
Pseudo-nitzschia galaxiae
cf. *Pseudochattonella verrucolosa*

NOTES:



Live sample.

Main species in the picture: *Thalassionema nitzschooides*