

## MC 1154

26/05/2015

### Phytoplankton abundance:

$1.3 \times 10^4$  cells ml<sup>-1</sup>

### Phytoplankton groups percentage:

flagellates: 94.6%, diatoms: 1.9%,  
dinoflagellates: 1.8%, coccolithophores: 1.7%

### Most abundant taxa:

Undetermined *Cryptophyceae* (3.6%)

### Most abundant species in the net sample:

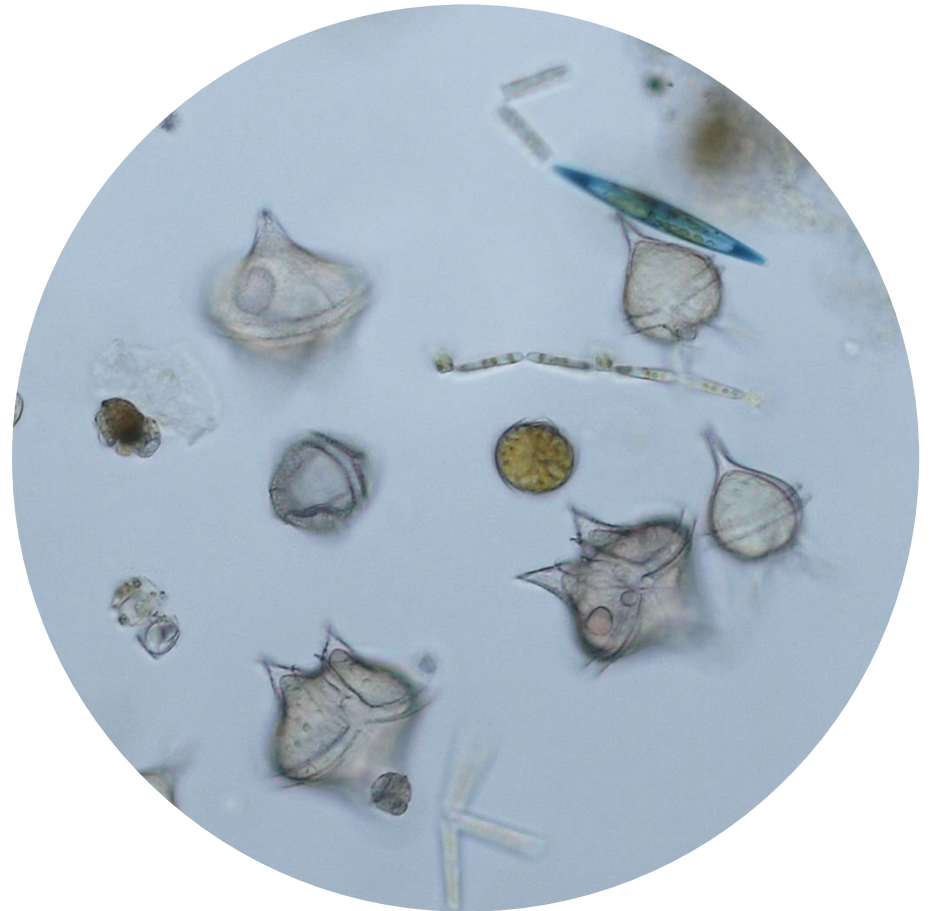
*Protoperidinium diabolus*

*Protoperidinium divergens*

cf. *Pseudochattonella verrucolosa*

**NOTES:** the quantitative sample was dominated by small flagellates.

Preliminary quantitative analysis



**Live sample.**

*Main species in the picture: Protoperidinium diabolus  
and Protoperidinium divergens*