

## MC 1155

01/06/2015

### Phytoplankton abundance:

$1.3 \times 10^4$  cells ml<sup>-1</sup>

### Phytoplankton groups percentage:

flagellates: 86.7%, diatoms: 9.8%,  
dinoflagellates: 2.3%, coccolithophores: 1.2%

### Most abundant taxa:

*Leptocylindrus danicus* (5.3%)

Undetermined *Cryptophyceae* (3.4%)

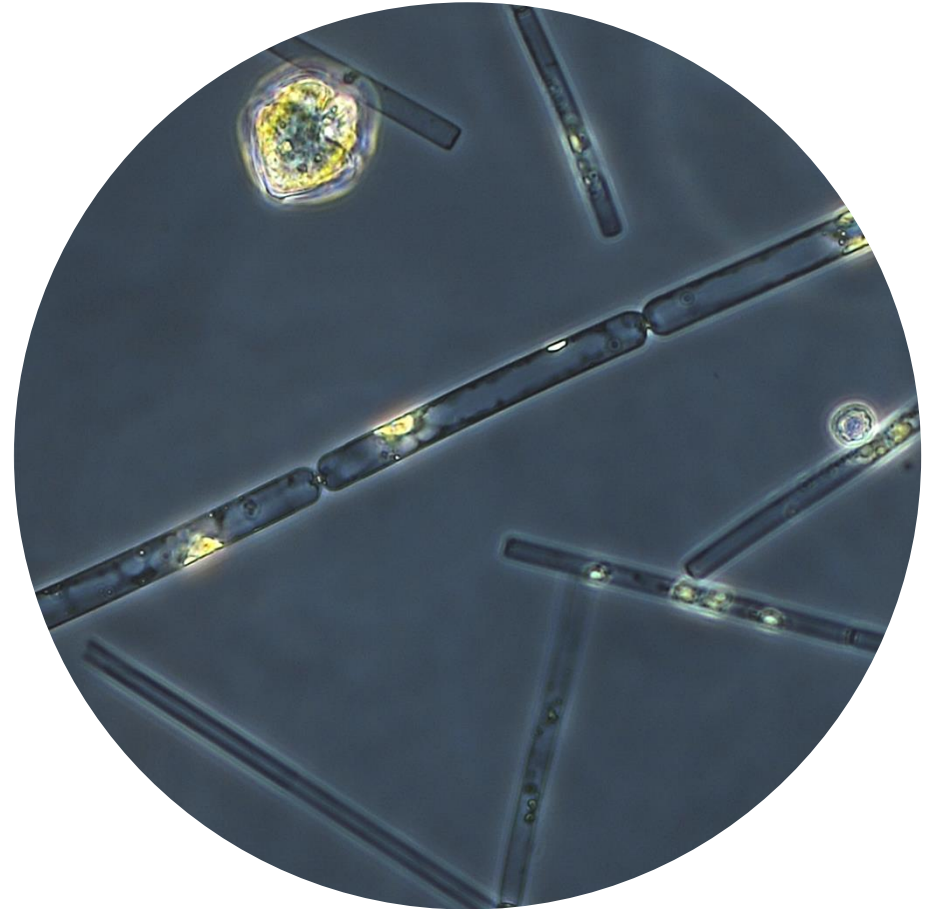
### Most abundant species in the net sample:

*Leptocylindrus danicus*

*Leptocylindrus convexus*

**NOTES:** the quantitative sample was dominated by small flagellates.

Preliminary quantitative analysis



**Live sample.**

**Main species in the picture:** *Dactyliosolen fragilissimus*  
and *Leptocylindrus danicus*