

## MC 1156

09/06/2015

### Phytoplankton abundance:

$1.4 \times 10^4$  cells ml<sup>-1</sup>

### Phytoplankton groups percentage:

flagellates: 75.2%, diatoms: 20.9%,  
dinoflagellates: 2.8%, coccolithophores: 1.1%

### Most abundant taxa:

*Oltmannsiellopsis viridis* (8.4%)

*Chaetoceros affinis* (5.6%)

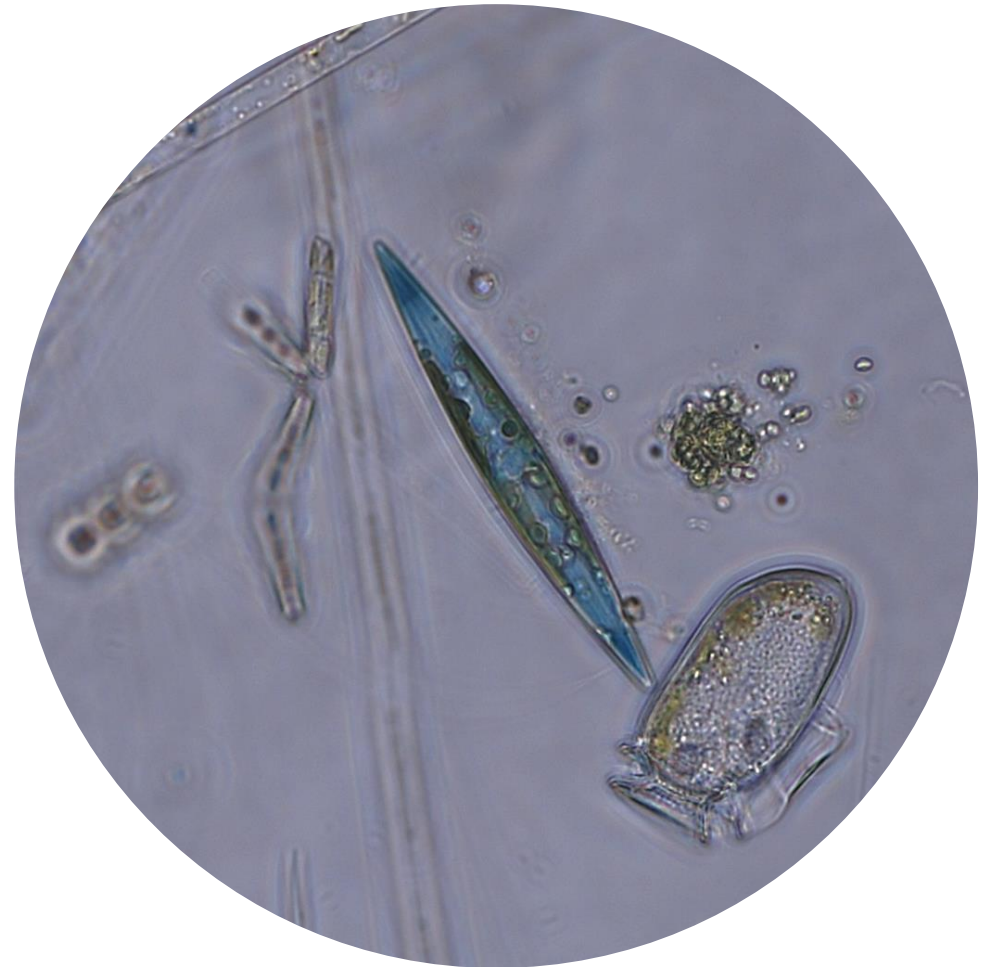
*Chaetoceros tenuissimus* (3.7%)

### Most abundant species in the net sample:

*Leptocylindrus convexus*

*Oltmannsiellopsis viridis*

### NOTES:



Live sample.

*Main species in the picture: Haslea sp.  
and Dinophysis sacculus*