

## Phytoplankton abundance:

$1.5 \times 10^3$  cells ml<sup>-1</sup>

## Phytoplankton groups percentage:

diatoms: 24.2%, flagellates: 72.5%,  
dinoflagellates: 2.8%, coccolithophores: 0.5%

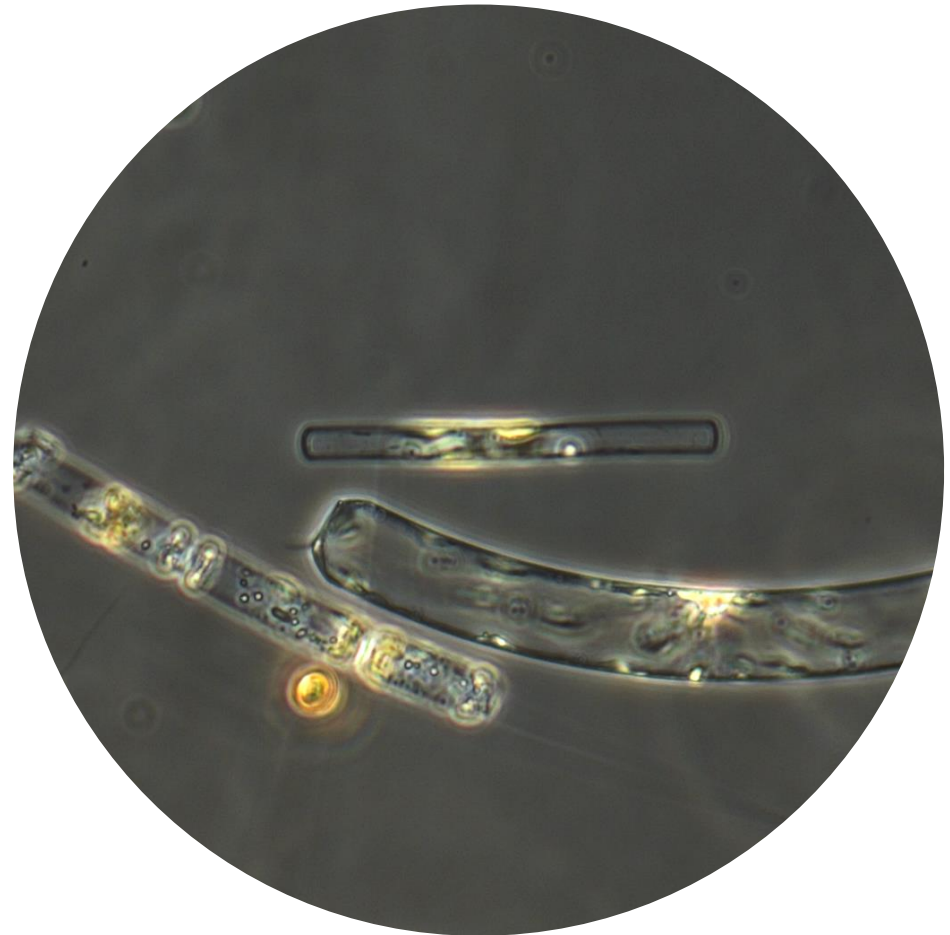
## Most abundant diatom species:

*Chaetoceros vixvisibilis* (8.2%)  
*Leptocylindrus convexus* (6.3%)  
*Pseudo-nitzschia delicatissima* (4.9%)

## Most abundant species in the net sample:

*Guinardia striata*  
*Dactyliosolen fragilissimus*  
*Chaetoceros vixvisibilis*

**NOTES:** preliminary quantitative analysis



### **Live sample**

**Main species in the picture:** *Guinardia striata* and  
*Leptocylindrus convexus*