

### Phytoplankton abundance:

$2.7 \times 10^4$  cells ml<sup>-1</sup>

### Phytoplankton groups percentage:

diatoms: 68.1%, flagellates: 30.5%,  
dinoflagellates: 1.1%, coccolithophores: 0.3%

### Most abundant diatom species:

*Chaetoceros socialis* (51.2%)

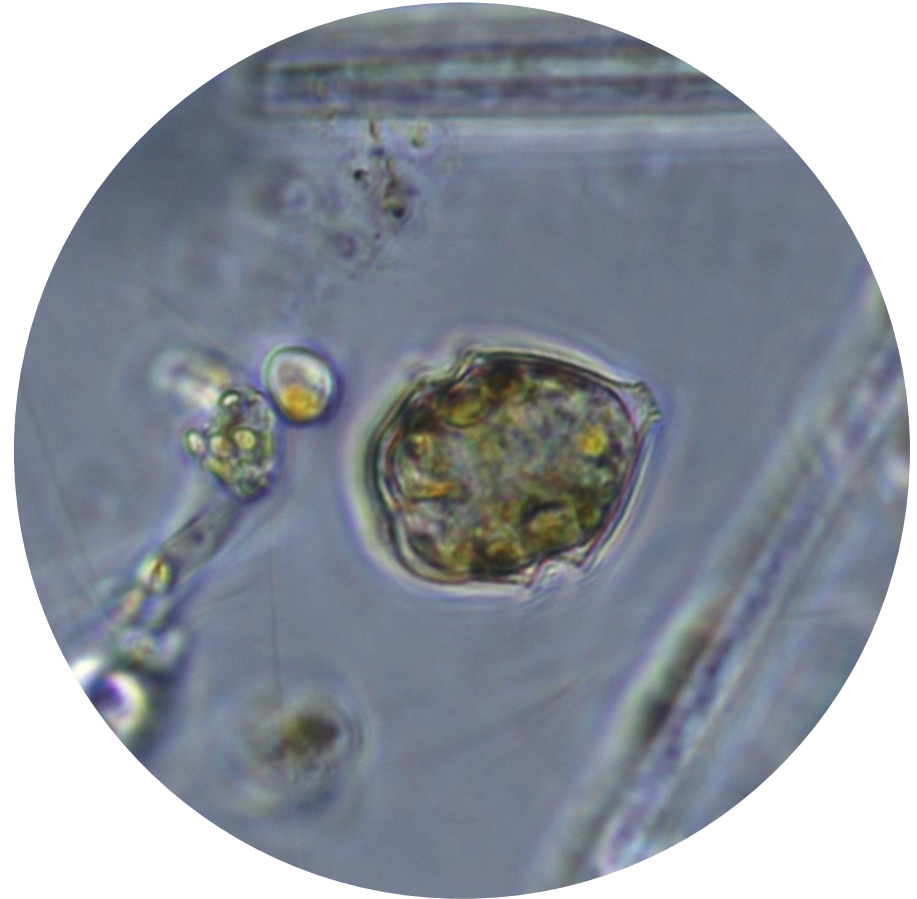
*Cylindrotheca closterium* (3.1%)

### Most abundant species in the net sample:

*Chaetoceros socialis*

*Chaetoceros tenuissimus*

### NOTES:



**Live sample**

**Main species in the picture: *Pentaparsodinium tyrrhenicum***