

Phytoplankton abundance:

3.7×10^4 cells ml⁻¹

Phytoplankton groups percentage:

diatoms: 72.0%, flagellates: 25.5%,
coccolithophores: 1.6%, dinoflagellates: 0.9%

Most abundant diatom species:

Chaetoceros socialis (13.0%)

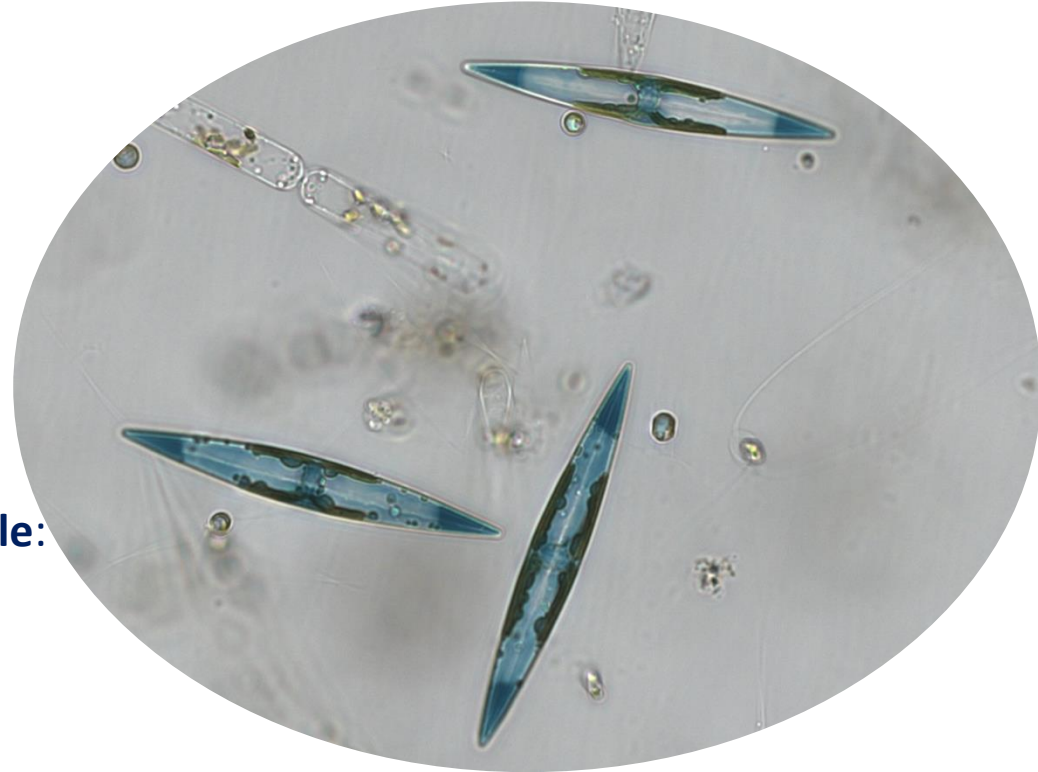
Skeletonema menzeli (11.4%)

Most abundant species in the net sample:

Skeletonema menzeli

Chaetoceros tenuissimus

Haslea sp. nov.



Live sample

Main species in the picture: *Haslea* sp. nov.

NOTES: