

Phytoplankton abundance:

6.5×10^4 cells ml⁻¹

Phytoplankton groups percentage:

flagellates: 70.6%, diatoms: 24.0%,
coccolithophores: 4.4%, dinoflagellates: 1.0%

Most abundant diatom species:

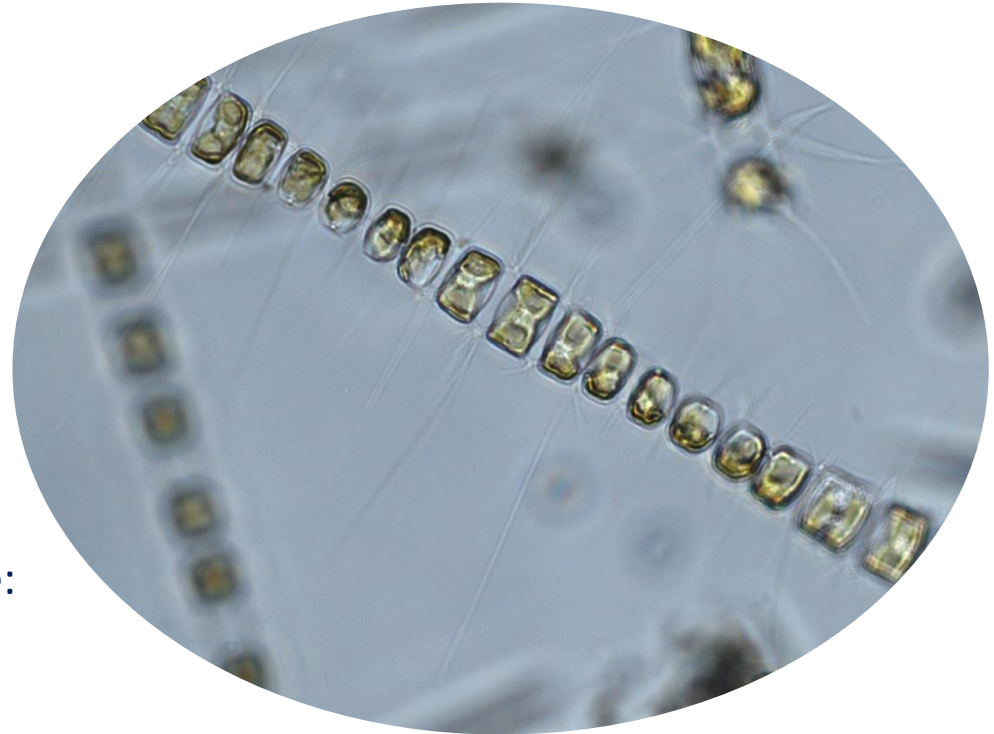
Skeletonema menzeli (8.7%)

Thalassiosira spp.(4.3%)

Most abundant species in the net sample:

Skeletonema tropicum

Skeletonema menzeli



NOTES:

Live sample

Main species in the picture: Chaetoceros tortissimus