

Phytoplankton abundance:

4.0×10^4 cells ml⁻¹

Phytoplankton groups percentage:

flagellates: 58.6%, diatoms: 33.1%,
coccolithophores: 6.7%, dinoflagellates: 1.6%

Most abundant diatom species:

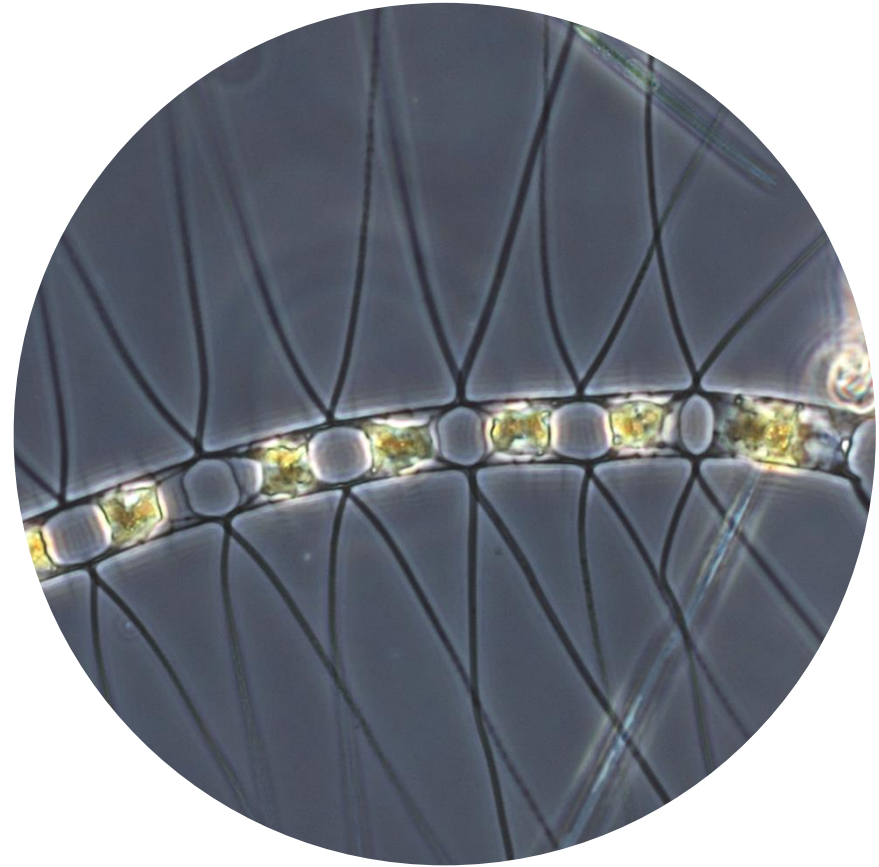
Pseudo-nitzschia delicatissima (6.4%)

Emiliana huxleyi (6.3%)

Most abundant species in the net sample:

Skeletonema tropicum

Pseudo-nitzschia delicatissima



Live sample

Main species in the picture: Chaetoceros decipiens

NOTES: preliminary quantitative analysis