

**Phytoplankton abundance:**

$1.8 \times 10^4$  cells ml<sup>-1</sup>

**Phytoplankton groups percentage:**

diatoms: 79.1%, flagellates: 58.6%,  
coccolithophores: 2.2%, dinoflagellates: 1.1%

**Most abundant diatom species:**

*Thalassiosira* spp. (31.7%)

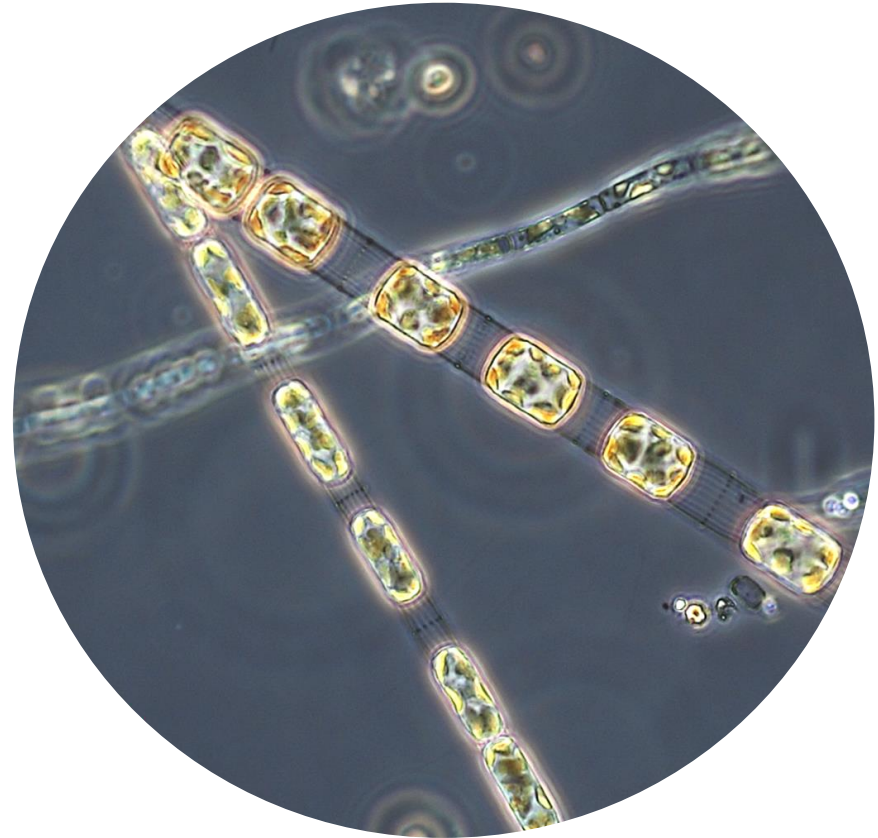
*Chaetoceros tenuissimus* (8.5)

**Most abundant species in the net sample:**

*Pseudo-nitzschia multistriata*

*Skeletonema tropicum*

*Lauderia annulata*



**Live sample**

**Main species in the picture:** *Skeletonema tropicum* and  
*Skeletonema pseudocostatum*

**NOTES:**