

Phytoplankton abundance:

2.4×10^3 cells ml⁻¹

Phytoplankton groups percentage:

flagellates: 50.5%, diatoms: 46.4%,
coccolithophores: 2.3%, dinoflagellates: 0.8%

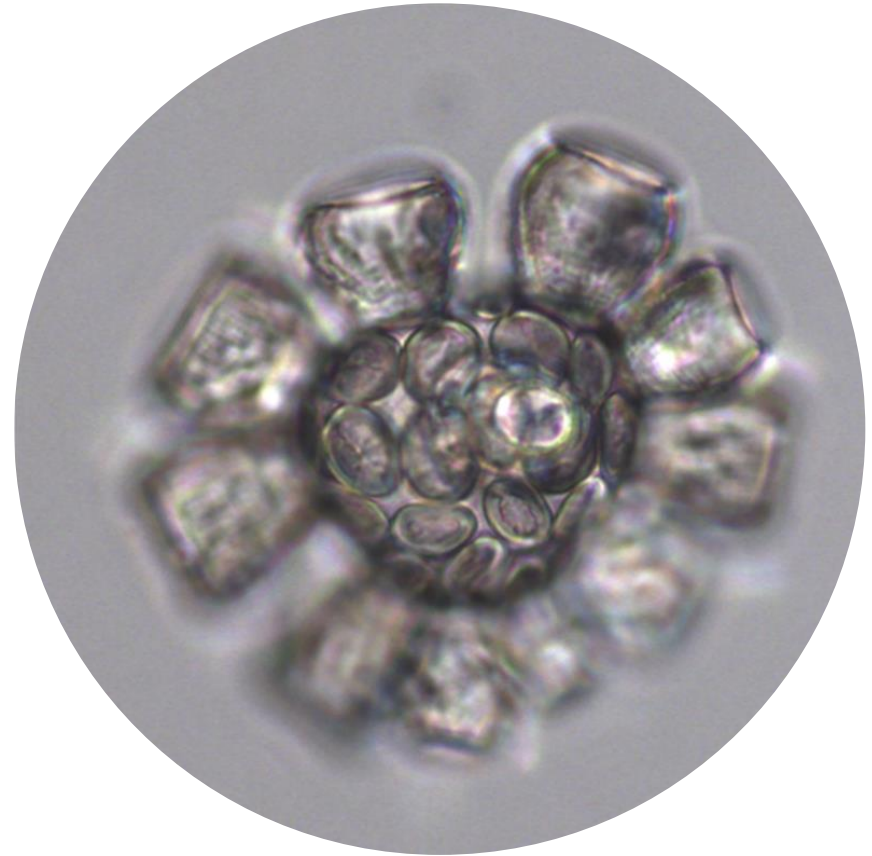
Most abundant taxa:

Chaetoceros socialis (23.6)
Leptocylindrus danicus (3.9%)

Most abundant species in the net sample:

Chaetoceros socialis
Chaetoceros vixvisibilis
Chaetoceros curvisetus

NOTES:



Live sample

Main species in the picture: Scyphosphaera apsteinii