

### Phytoplankton abundance:

$5.0 \times 10^3$  cells ml<sup>-1</sup>

### Phytoplankton groups percentage:

flagellates: 85.7%, diatoms: 11.6%,  
coccolithophores: 1.8%, dinoflagellates: 0.9%

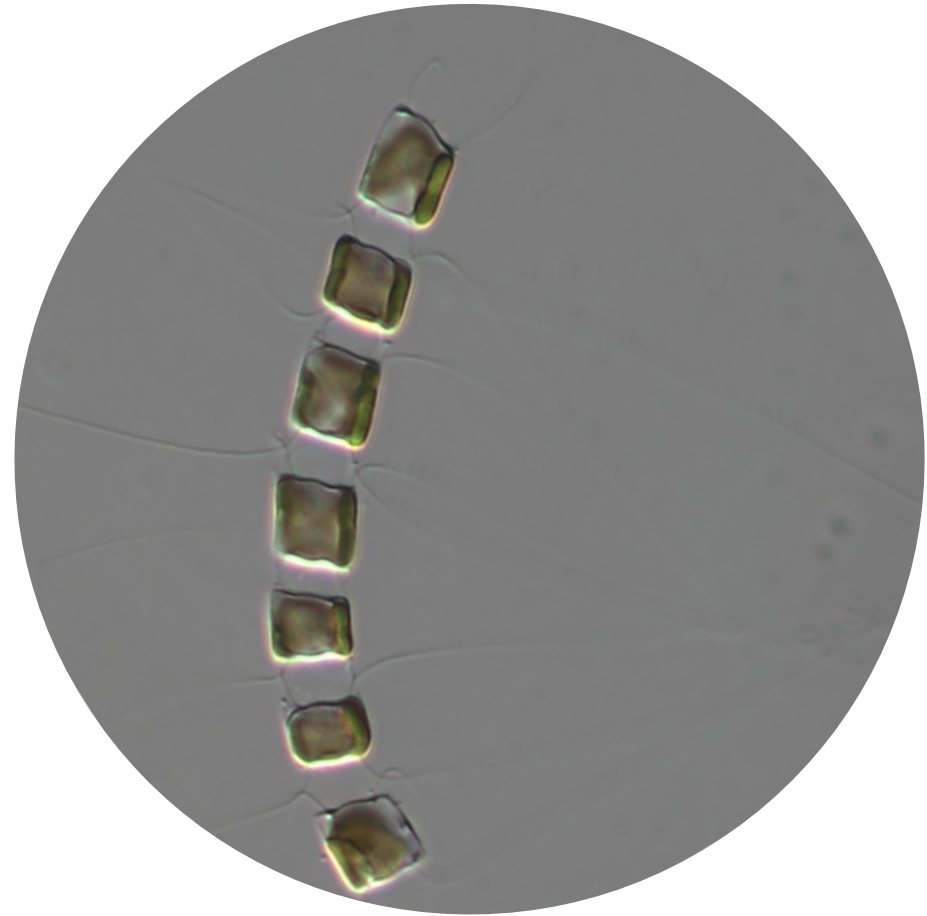
### Most abundant taxa:

Heterotrophic phytoflagellates (55.0%)  
*Chaetoceros socialis* (7.0%)

### Most abundant species in the net sample:

*Chaetoceros socialis*  
*Chaetoceros brevis*  
*Leptocylindrus convexus*

### NOTES:



**Live sample**

*Main species in the picture: Chaetoceros socialis*