

Phytoplankton abundance:

1.3×10^3 cells ml⁻¹

Phytoplankton groups percentage:

flagellates: 46.2%, diatoms: 9.3%,
coccolithophores: 6.4%, dinoflagellates: 3.8%

Most abundant taxa:

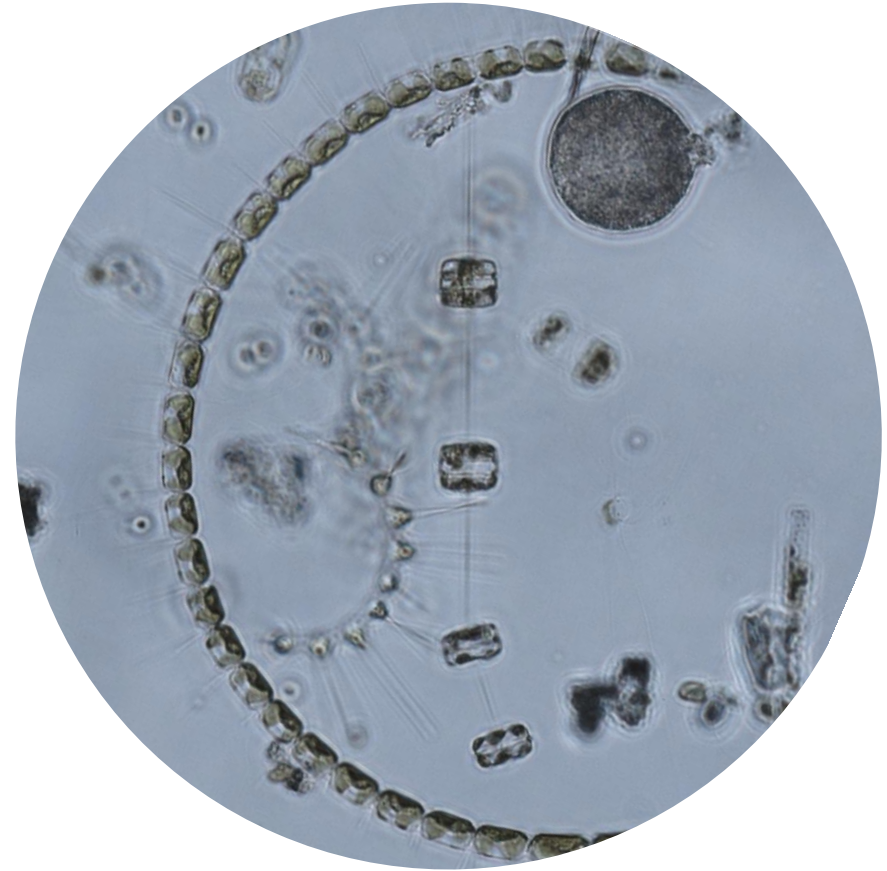
Chaetoceros curvisetus (16.1%)

Chaetoceros socialis (7.1%)

Most abundant species in the net sample:

Chaetoceros curvisetus

Lithodesmium sp.



Live sample

Main species in the picture: *Chaetoceros curvisetus*, *Asterionellopsis glacialis* and *Thalassiosira rotula*

NOTES: