

Phytoplankton abundance:

1.1×10^3 cells ml⁻¹

Phytoplankton groups percentage:

flagellates: 75.9%, diatoms: 16.6%,
coccolithophores: 3.8%, dinoflagellates: 3.7%

Most abundant diatom species:

Asterionellopsis glacialis (5.5%)

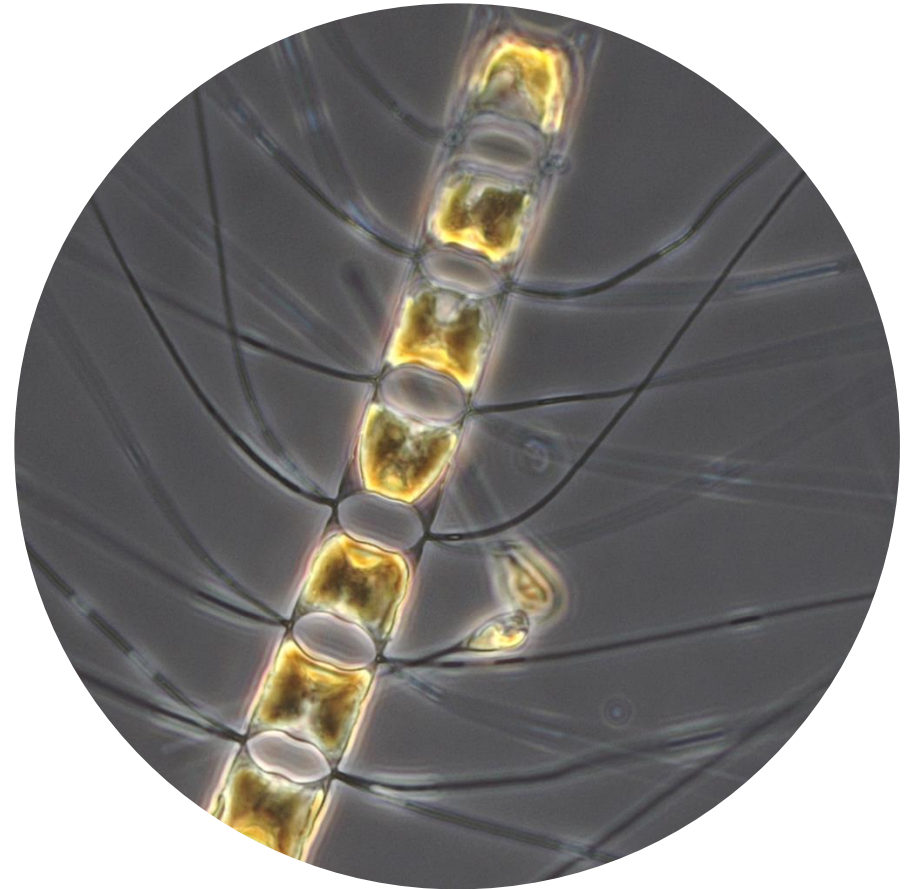
Skeletonema menzeli (7.1%)

Most abundant species in the net sample:

Asterionellopsis glacialis

Leptocylindrus mediterraneus

NOTES:



Live sample

Main species in the picture: *Chaetoceros brevis*.