

**Phytoplankton abundance:**

$6.4 \times 10^2$  cells ml<sup>-1</sup>

**Phytoplankton groups percentage:**

flagellates: 83.4%, diatoms: 8.6%,  
coccolithophores: 4.3%, dinoflagellates: 3.7%

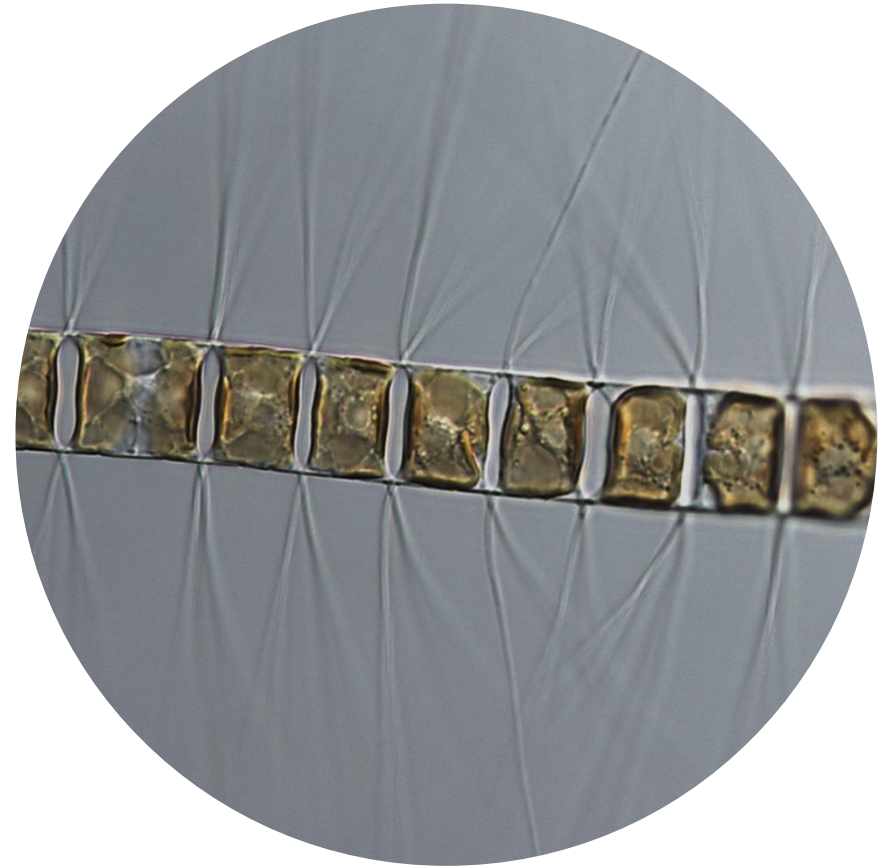
**Most abundant taxa:**

Undetermined Cryptophyceae (5.5%)  
*Emiliana huxleyi* (4.1%)

**Most abundant species in the net sample:**

*Sample without dominant species*

**NOTES:** preliminary quantitative analysis.



**Live sample**

**Main species in the picture:** *Chaetoceros brevis*