

Phytoplankton abundance:

4.5×10^3 cells ml⁻¹

Phytoplankton groups percentage:

flagellates: 60.6%, diatoms: 37.7%,
coccolithophores: 1.0%, dinoflagellates: 0.7%

Most abundant taxa:

Chaetoceros socialis (10.9%)

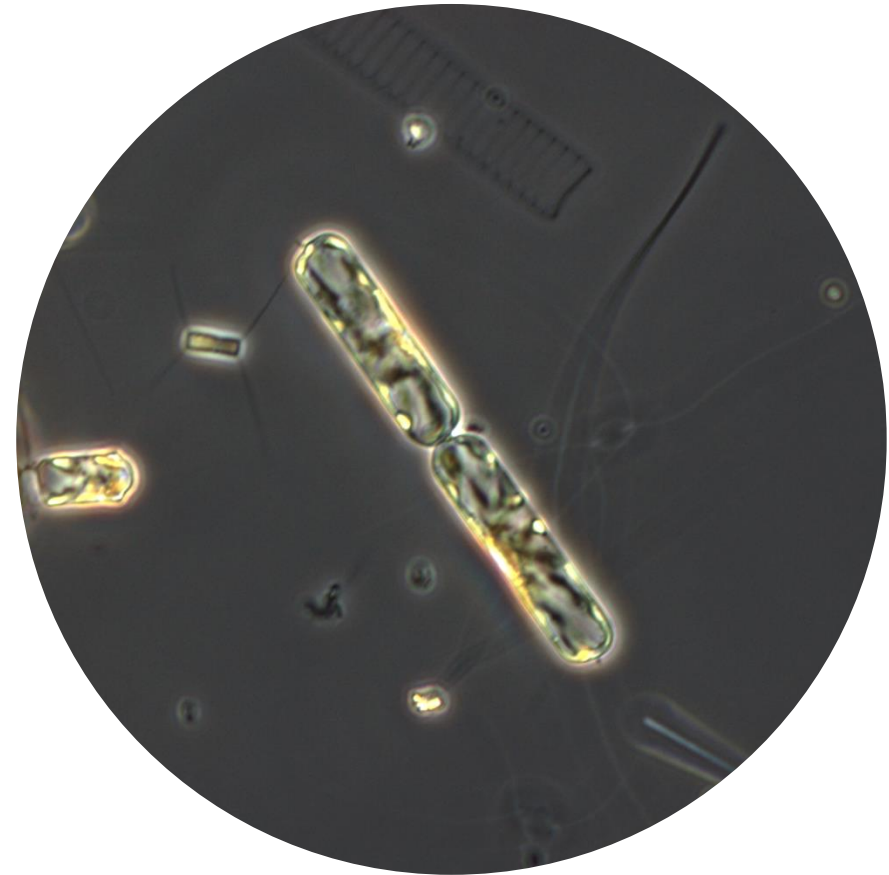
Chaetoceros diadema (3.3%)

Most abundant species in the net sample:

Chaetoceros diadema

Chaetoceros curvisetus

NOTES: preliminary quantitative analysis.



Live sample

Main species in the picture: *Dactyliosolen fragilissimus*