

Phytoplankton abundance:

4.8×10^3 cells ml⁻¹

Phytoplankton groups percentage:

diatoms: 53.8%, flagellates: 42.3%,
dinoflagellates: 2.1%, coccolithophores: 1.8%

Most abundant taxa:

Pseudo-nitzschia delicatissima (11.7%)

Chaetoceros tenuissimus (8.7%)

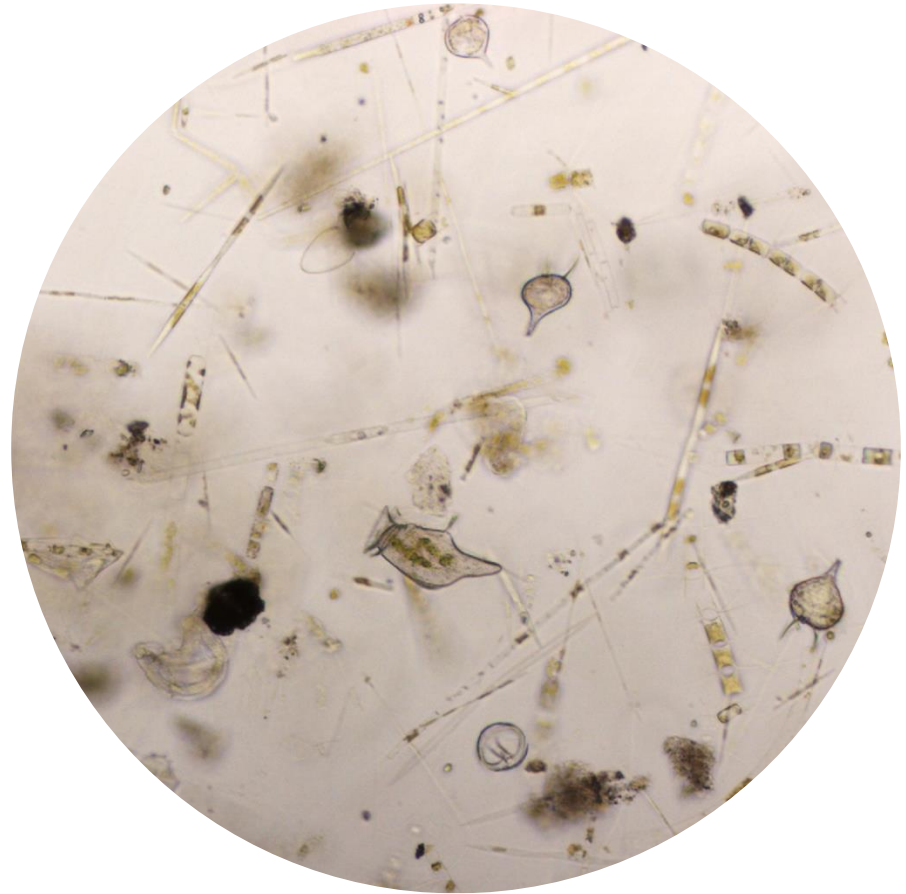
Most abundant species in the net sample:

Pseudo-nitzschia delicatissima

Protoperidinium diabolus

Chaetoceros curvisetus

NOTES:



Live sample