

### Phytoplankton abundance:

$3.1 \times 10^4$  cells ml<sup>-1</sup>

### Phytoplankton groups percentage:

diatoms: 53.0%, flagellates: 42.3%,  
dinoflagellates: 1.9%, coccolithophores: 1.4%

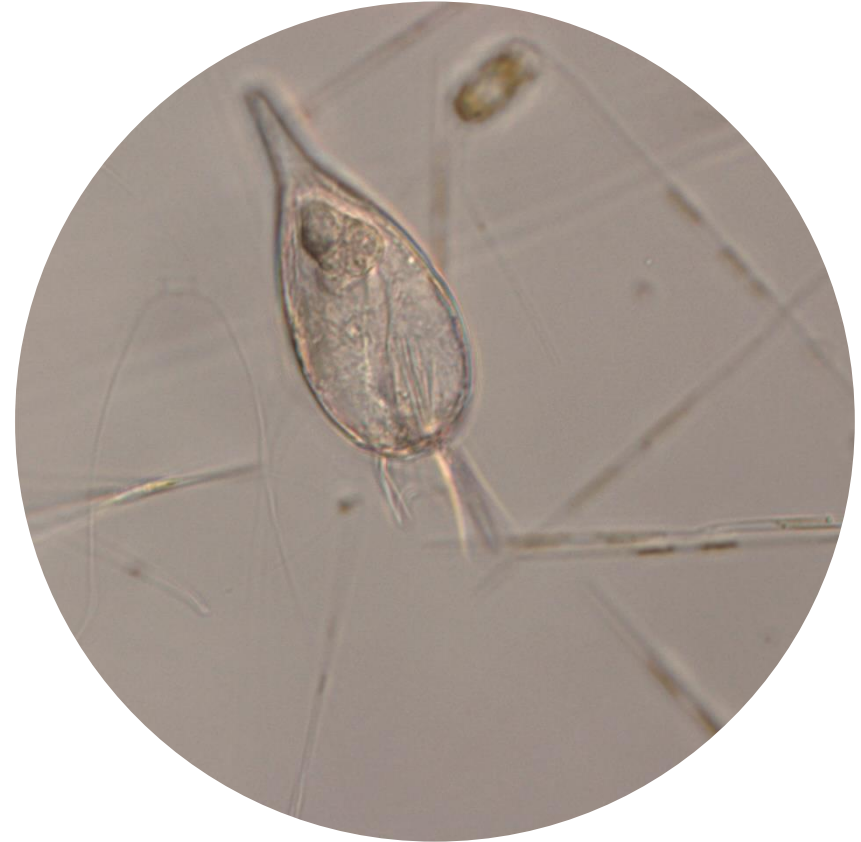
### Most abundant taxa:

*Chaetoceros tenuissimus* (38.9%)  
*Pseudo-nitzschia delicatissima* (3.8%)

### Most abundant species in the net sample:

*Pseudo-nitzschia delicatissima*  
*Protoperdinium diabolus*

**NOTES:** preliminary quantitative analysis



**Live sample**

*Main species in the picture: Podolampas bipes*