

Phytoplankton abundance:

3.2×10^4 cells ml⁻¹

Phytoplankton groups percentage:

diatoms: 71.3%, flagellates: 27.8%,
dinoflagellates: 0.6%, coccolithophores: 0.3%

Most abundant taxa:

Pseudo-nitzschia galaxiae (11.5%)

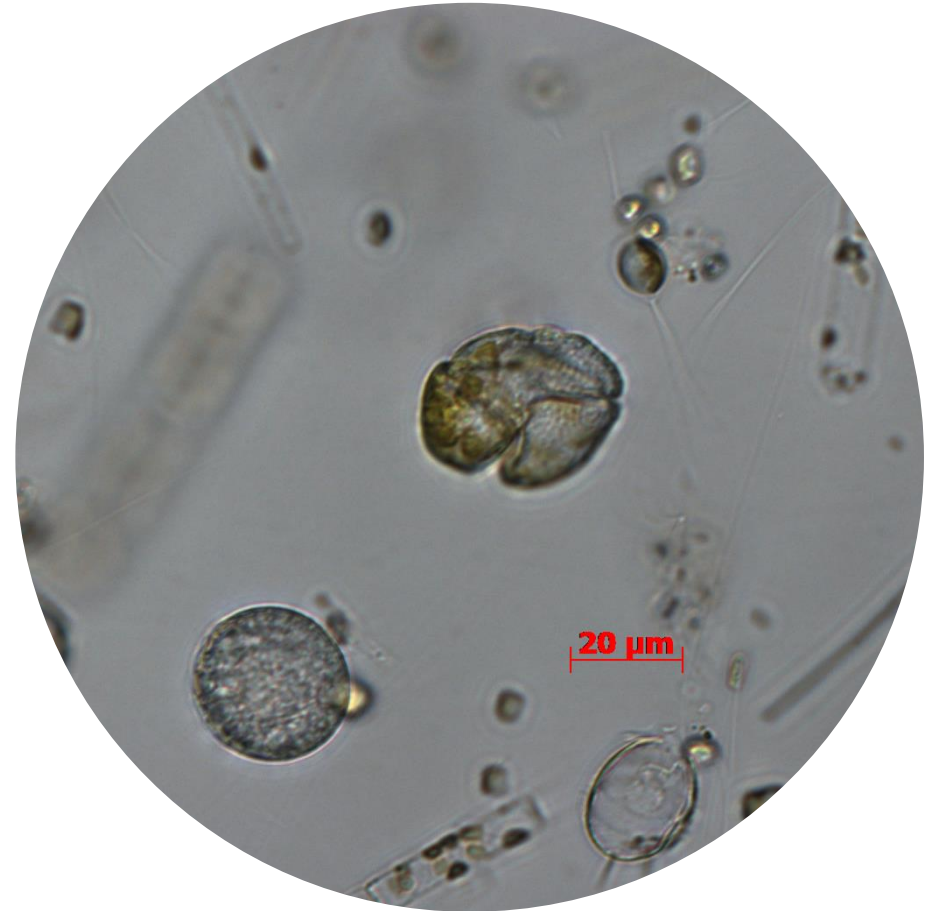
Chaetoceros tenuissimus (11.0%)

Most abundant species in the net sample:

Pseudo-nitzschia galaxiae

Chaetoceros curvisetus

NOTES: preliminary quantitative analysis



Live sample

Main species in the picture: Karenia sp.