

Phytoplankton abundance:

6.8×10^3 cells ml⁻¹

Phytoplankton groups percentage:

flagellates: 60%, diatoms: 34.8%,
dinoflagellates: 3.9%, coccolithophores: 0.8%

Most abundant taxa:

Leptocylindrus danicus (12.8%)

Leptocylindrus convexus (11.1%)

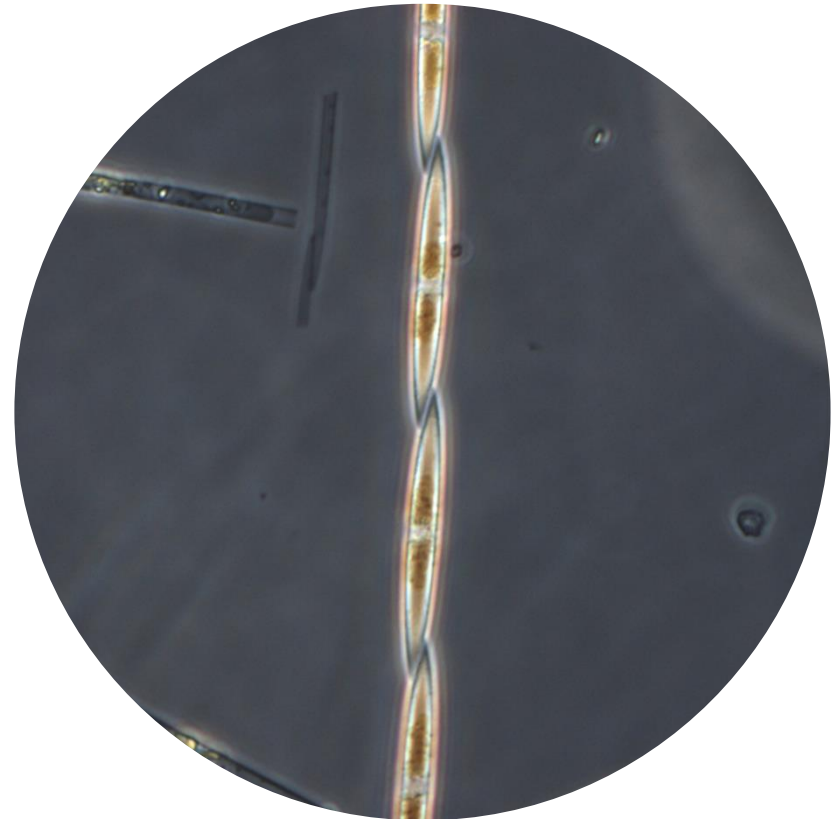
Most abundant species in the net sample:

Leptocylindrus convexus

Leptocylindrus danicus

Pseudo-nitzschia fraudulenta

NOTES:



Live sample

Main species in the picture: *Pseudo-nitzschia fraudulenta*