

Phytoplankton abundance:

2.9×10^4 cells ml⁻¹

Phytoplankton groups percentage:

diatoms: 77.6%, flagellates: 21.1%,
dinoflagellates: 1.1%, coccolithophores: 0.2%

Most abundant taxa:

Leptocylindrus convexus (36.3%)

Cerataulina pelagica (18.2%)

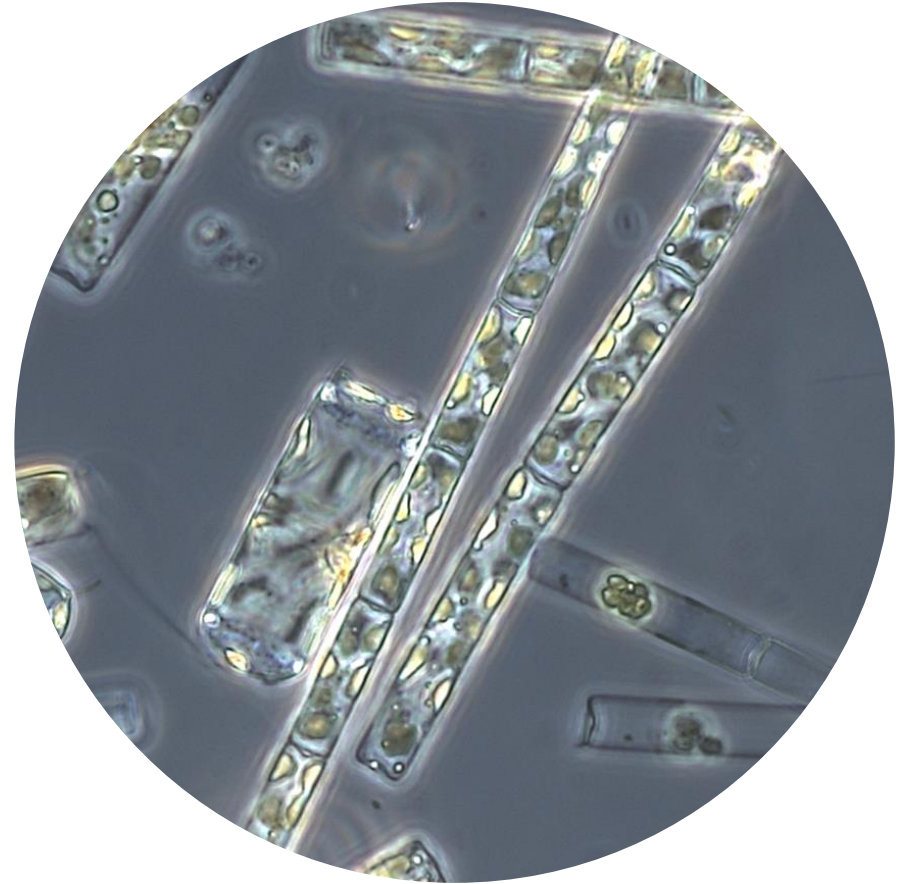
Most abundant species in the net sample:

Cerataulina pelagica

Leptocylindrus convexus

Leptocylindrus danicus

NOTES:



Live sample

Main species in the picture: *Leptocylindrus danicus* and
Cerataulina pelagica