

Phytoplankton abundance:

1.7×10^3 cells ml⁻¹

Phytoplankton groups percentage:

flagellates: 71.8%, diatoms: 21.7%,
dinoflagellates: 3.8%, coccolithophores: 2.7%

Most abundant diatom species:

Pseudo-nitzschia delicatissima (13.7%)

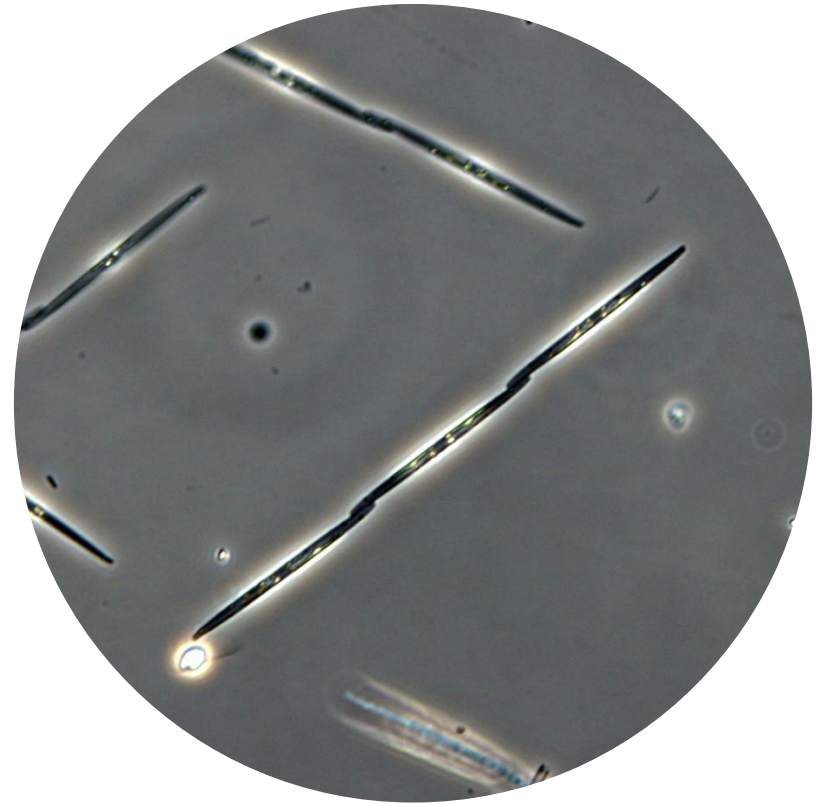
Leptocylindrus convexus (1.5%)

Most abundant species in the net sample:

Pseudo-nitzschia delicatissima

Chaetoceros curvisetus

NOTES: preliminary quantitative analysis



Live sample

Main species in the picture: *Pseudo-nitzschia delicatissima*