

Phytoplankton abundance:

9.2×10^2 cells ml⁻¹

Phytoplankton groups percentage:

flagellates: 85.7%, diatoms: 9.0%,
coccolithophores: 3.5%, dinoflagellates: 1.8%

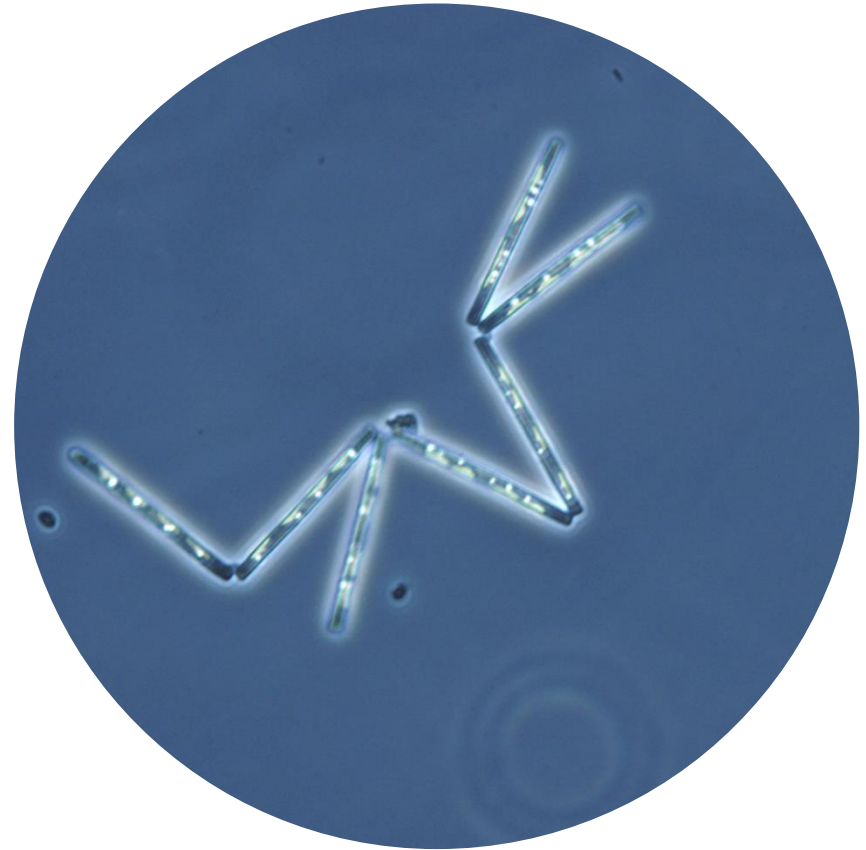
Most abundant diatom species:

Leptocylindrus danicus (5.3%)
Pseudo-nitzschia delicatissima (1.8%)

Most abundant species in the net sample:

Leptocylindrus danicus
Chaetoceros spp.

NOTES:



Live sample

Main species in the picture: Thalassionema nitzschioides